

Report No.:

Test Time: 2021/3/17 16:44:40

LUMINAIRE PHOTOMETRIC TEST REPORT

Luminaire Property

Manufacturer: 中山市诺邦照明有限公司
Luminaire Type: HB.T130S 15°
Lamp Type: CLM-9
Luminous Width: 54 mm
Luminous Length: 54 mm
Luminous Height: 132 mm

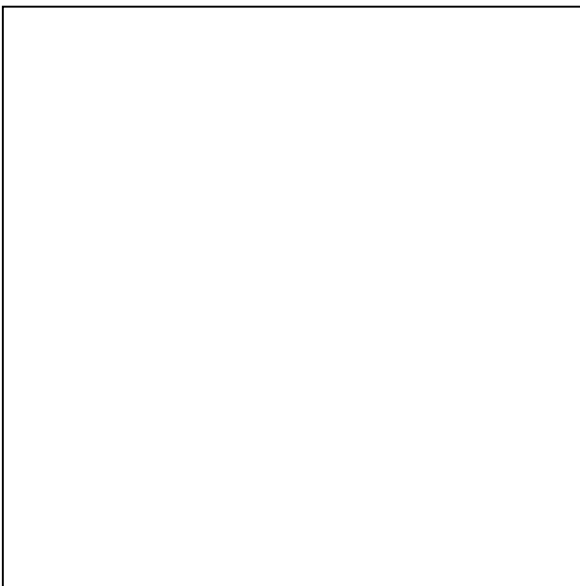
Voltage(V): 220.00 V
Current(A): 1.0880 A
Power(W): 29.50 W
Power Factor: 0.6450
Lamp Luminous Flux: 2105.00

Photometric Results

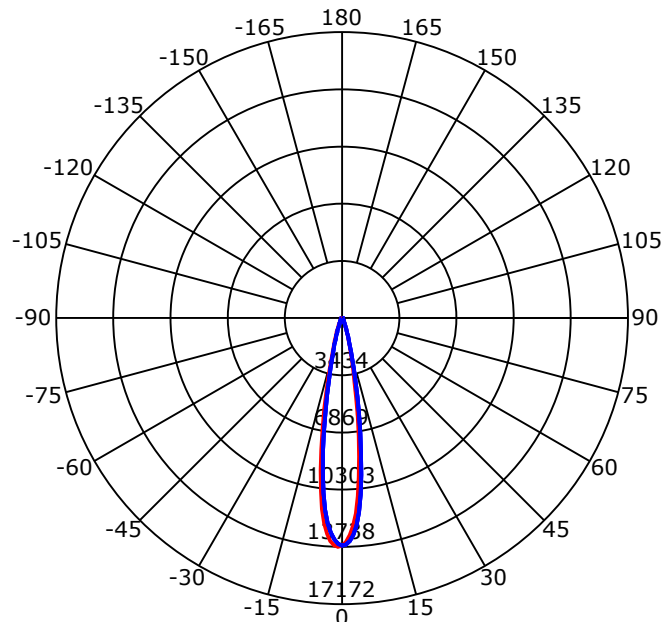
CIE Class: Direct
Luminaire Luminous Flux: 1879.204
Downward Ratio: 0.00%
Luminaire Efficacy Rating(LER): 63.70 lm/W
Beam Angle(50%) C0-180,C90-270: 18.2,18.3
Field Angle(10%) C0-180,C90-270: 34.5,34.0

Max. Intensity: 13737.56 cd
Max.Intensity Angle: C=180 Gamma=1
Upward Ratio: 89.27%
Efficacy: 89.27%
Center Intensity: 13670.06 cd

Picture of Luminaire



Luminous Intensity Distribution Curve



Beam Angle(50%) C0-180,C90-270: 18.2 deg,18.3 deg

C0-180 — C90-270 —

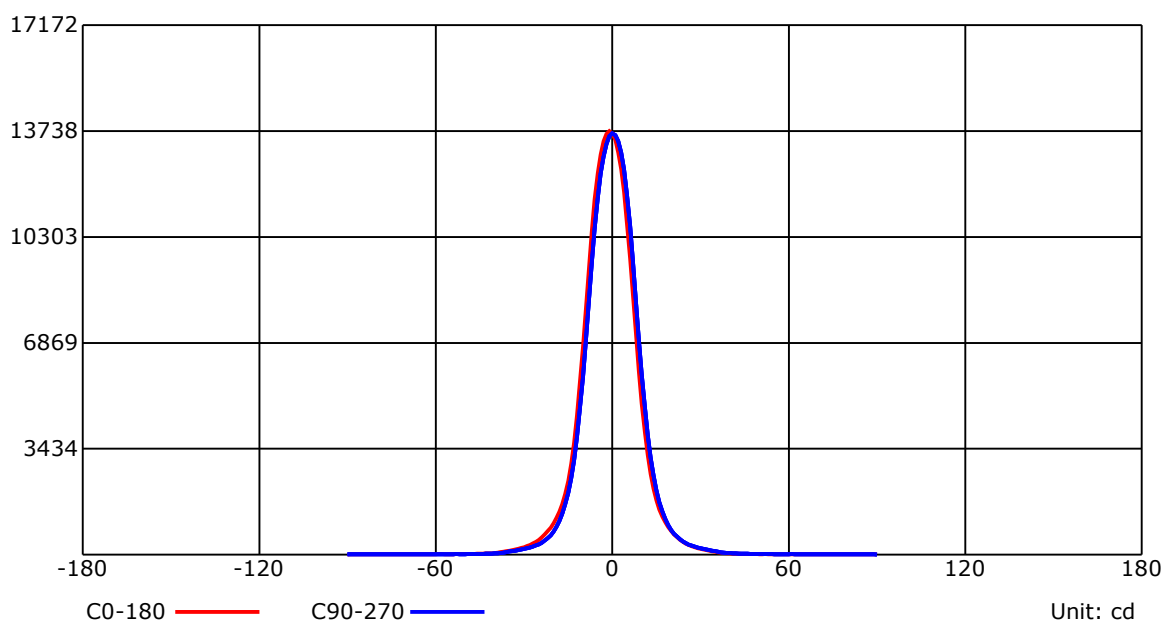
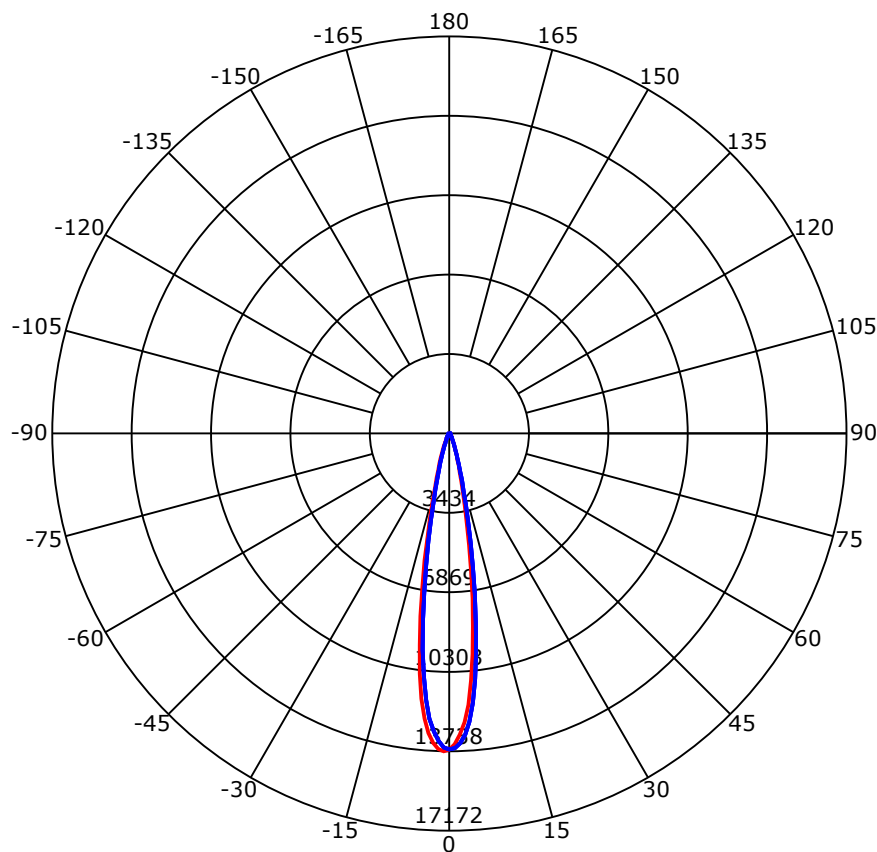
C Range: 0 - 360 Deg
C Interval: 45.0 Deg
Test Speed: High
Temperature: 7.76
Operators: 周奇
Test Date: 2021/3/17 16:44:40

G Range: 0 - 90 Deg
G Interval: 1.0 Deg
Test System: Huipu CPM-1800B Goniophotometer
Humidity: 1
Test Distance: 7.76 m
Remarks:

Report No.:

Test Time: 2021/3/17 16:44:40

Luminous Intensity Distribution Curve



C Range: 0 - 360 Deg

C Interval: 45.0 Deg

Test Speed: High

Temperature: 7.76

Operators: 周奇

Test Date: 2021/3/17 16:44:40

G Range: 0 - 90 Deg

G Interval: 1.0 Deg

Test System: Huipu CPM-1800B Goniophotometer

Humidity: 1

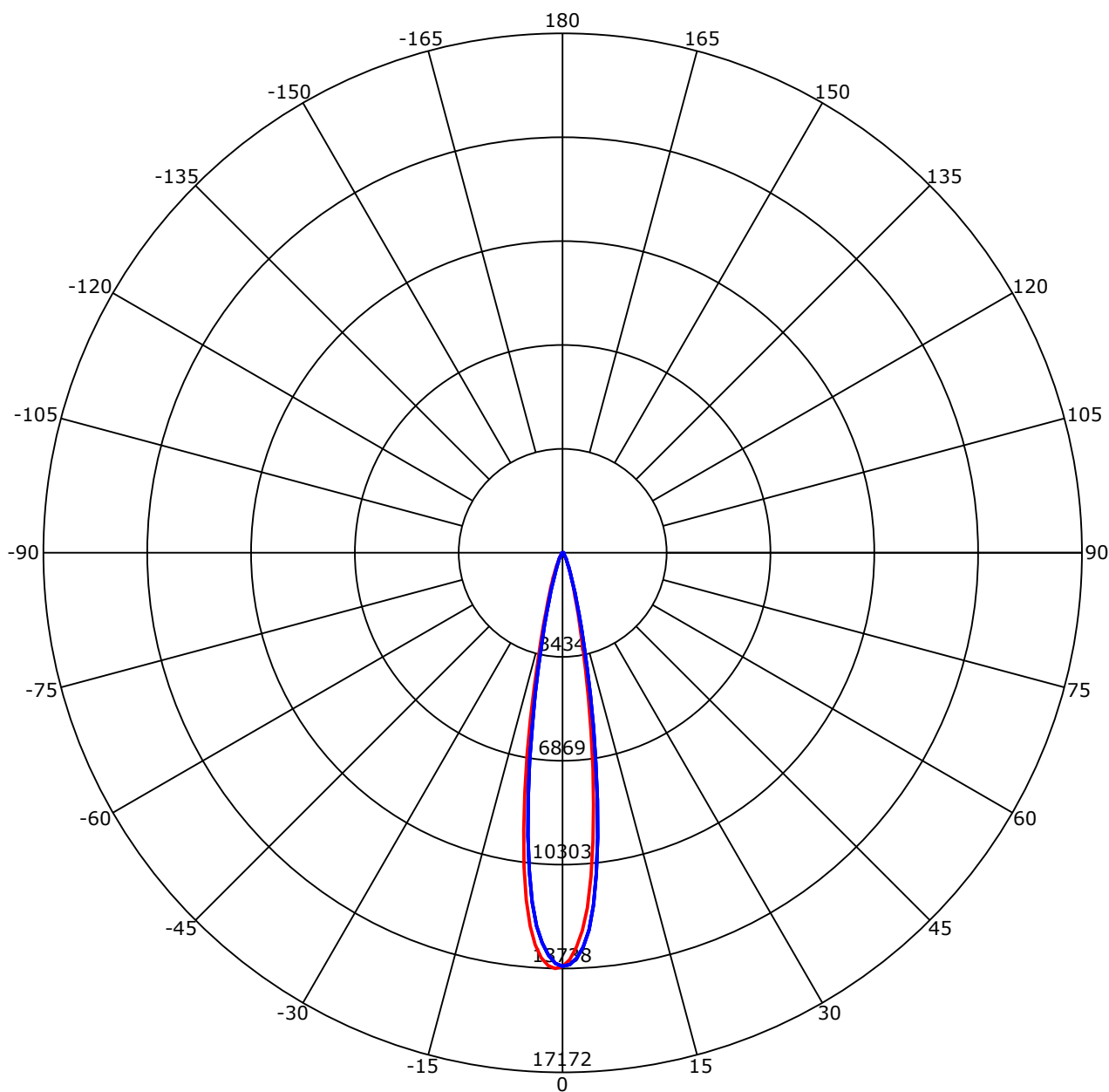
Test Distance: 7.76 m

Remarks:

Report No.:

Test Time: 2021/3/17 16:44:40

Luminous Intensity Distribution Curve



C0-180 — C90-270

Unit: cd/klm

C Range: 0 - 360 Deg
C Interval: 45.0 Deg
Test Speed: High
Temperature: 7.76
Operators: 周奇
Test Date: 2021/3/17 16:44:40

G Range: 0 - 90 Deg
G Interval: 1.0 Deg
Test System: Huipu CPM-1800B Goniophotometer
Humidity: 1
Test Distance: 7.76 m
Remarks:

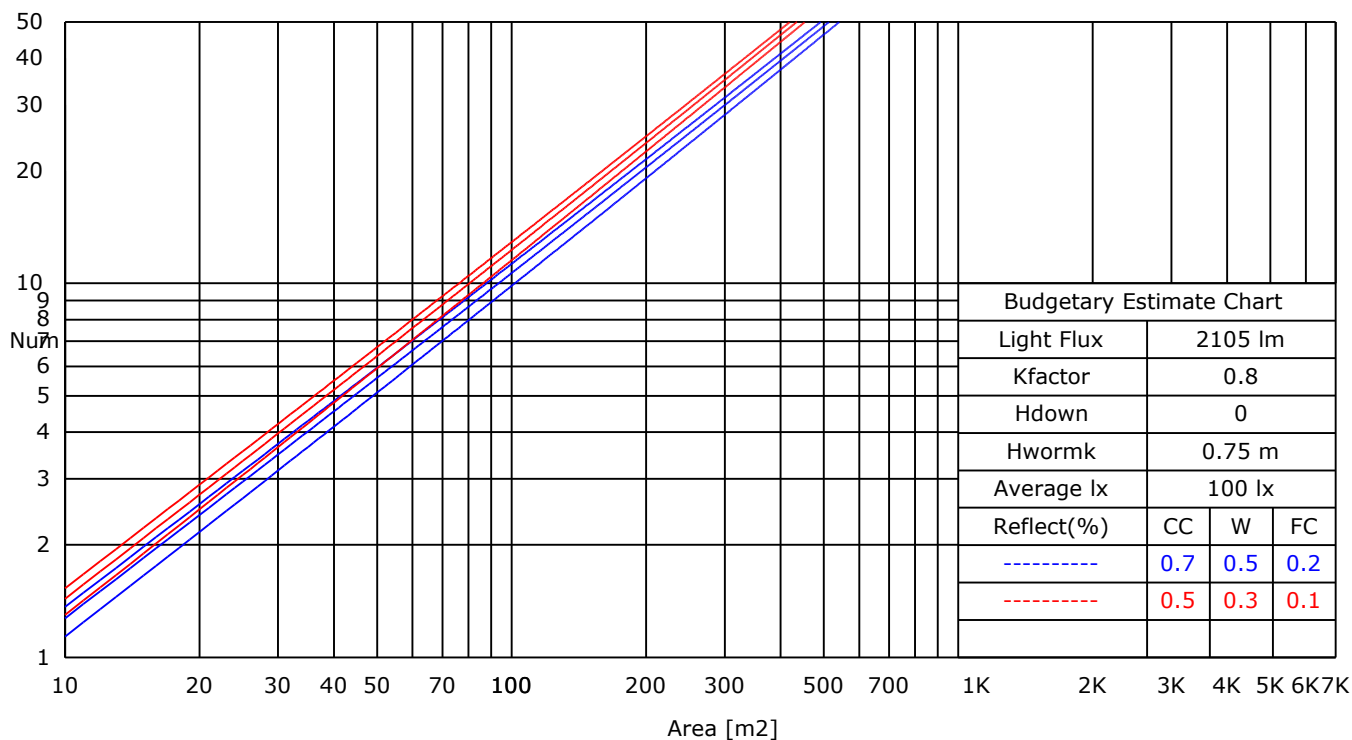
Report No.:

Test Time: 2021/3/17 16:44:40

UTILIZATION FACTORS TABLE

RHOCC	80			70			50			30			10			0
RHOW	50	30	10	50	30	10	50	30	10	50	30	10	50	30	10	0
RCR	COEFFICIENTS OF UTILIZATION FOR RHOFC=20															
0	1.06	1.06	1.06	1.04	1.04	1.04	0.99	0.99	0.99	0.95	0.95	0.95	0.91	0.91	0.91	0.89
1	0.64	0.59	0.55	0.64	0.59	0.55	0.63	0.57	0.53	0.61	0.55	0.50	0.58	0.52	0.47	0.42
2	0.60	0.56	0.53	0.60	0.56	0.53	0.60	0.55	0.51	0.58	0.53	0.48	0.56	0.50	0.45	0.41
3	0.57	0.54	0.52	0.58	0.54	0.51	0.58	0.53	0.49	0.56	0.51	0.47	0.55	0.49	0.44	0.40
4	0.55	0.52	0.51	0.56	0.52	0.50	0.56	0.51	0.48	0.55	0.50	0.45	0.53	0.48	0.43	0.39
5	0.54	0.51	0.50	0.54	0.51	0.49	0.54	0.50	0.47	0.53	0.48	0.44	0.52	0.46	0.42	0.39
6	0.52	0.50	0.49	0.53	0.50	0.48	0.53	0.49	0.46	0.52	0.47	0.44	0.51	0.45	0.41	0.38
7	0.51	0.49	0.48	0.51	0.49	0.47	0.51	0.48	0.45	0.51	0.46	0.43	0.50	0.45	0.40	0.37
8	0.50	0.48	0.47	0.50	0.48	0.46	0.50	0.47	0.44	0.50	0.45	0.42	0.49	0.44	0.40	0.37
9	0.49	0.48	0.47	0.49	0.47	0.46	0.49	0.46	0.44	0.49	0.44	0.41	0.48	0.43	0.39	0.36
10	0.49	0.47	0.46	0.49	0.46	0.45	0.48	0.45	0.43	0.48	0.44	0.41	0.47	0.42	0.39	0.36

LUMINAIRE BUDGETARY ESTIMATE DIAGRAM



C Range: 0 - 360 Deg

C Interval: 45.0 Deg

Test Speed: High

Temperature: 7.76

Operators: 周奇

Test Date: 2021/3/17 16:44:40

G Range: 0 - 90 Deg

G Interval: 1.0 Deg

Test System: Huipu CPM-1800B Goniophotometer

Humidity: 1

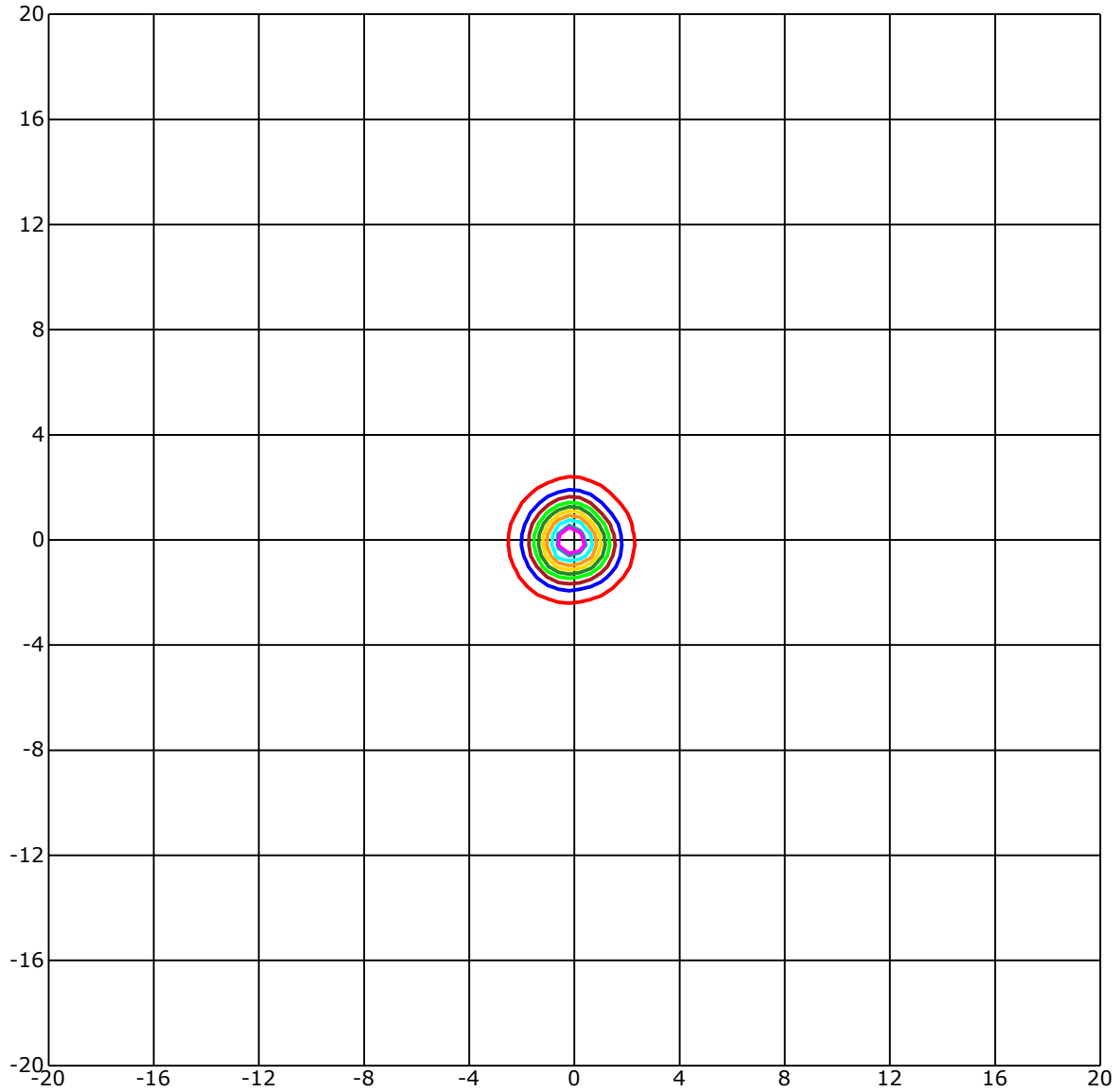
Test Distance: 7.76 m

Remarks:

Report No.:

Test Time: 2021/3/17 16:44:40

ISOLX DIAGRAM



C Range: 0 - 360 Deg
C Interval: 45.0 Deg
Test Speed: High
Temperature: 7.76
Operators: 周奇
Test Date: 2021/3/17 16:44:40

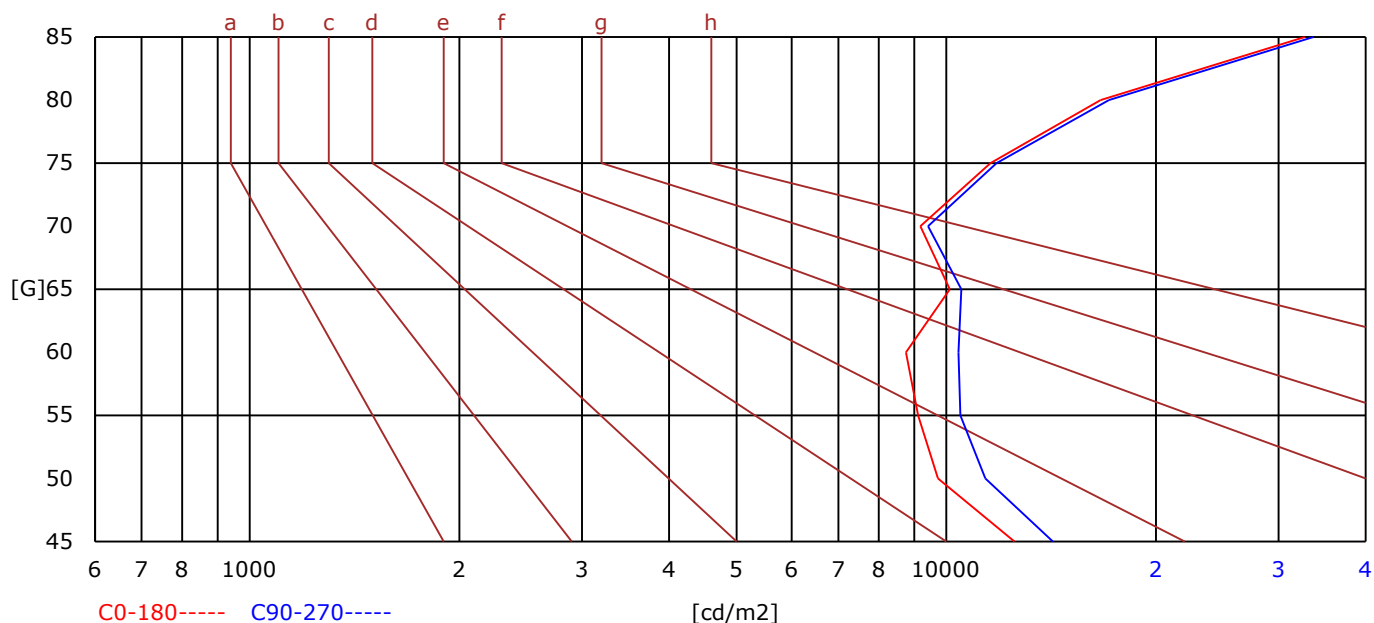
G Range: 0 - 90 Deg
G Interval: 1.0 Deg
Test System: Huipu CPM-1800B Goniophotometer
Humidity: 1
Test Distance: 7.76 m
Remarks:

Report No.:

Test Time: 2021/3/17 16:44:40

BRIGHT LIMIT DIAGRAM

C/G	45	50	55	60	65	70	75	80	85
C0	12529	9734	9109	8756	10115	9178	11569	16649	32698
C90	14223	11373	10477	10408	10506	9419	11809	17125	33646
Dazzle	Quality	Illuminance	---	---	---	---	---	---	---
1.15	A	2000	1000	500	<=300				
1.5	B		2000	1000	500	<=300			
1.85	C			2000	1000	500	<=300		
2.2	D				2000	1000	500	<=300	
2.55	E					2000	1000	500	<=300
---	---	a	b	c	d	e	f	g	h



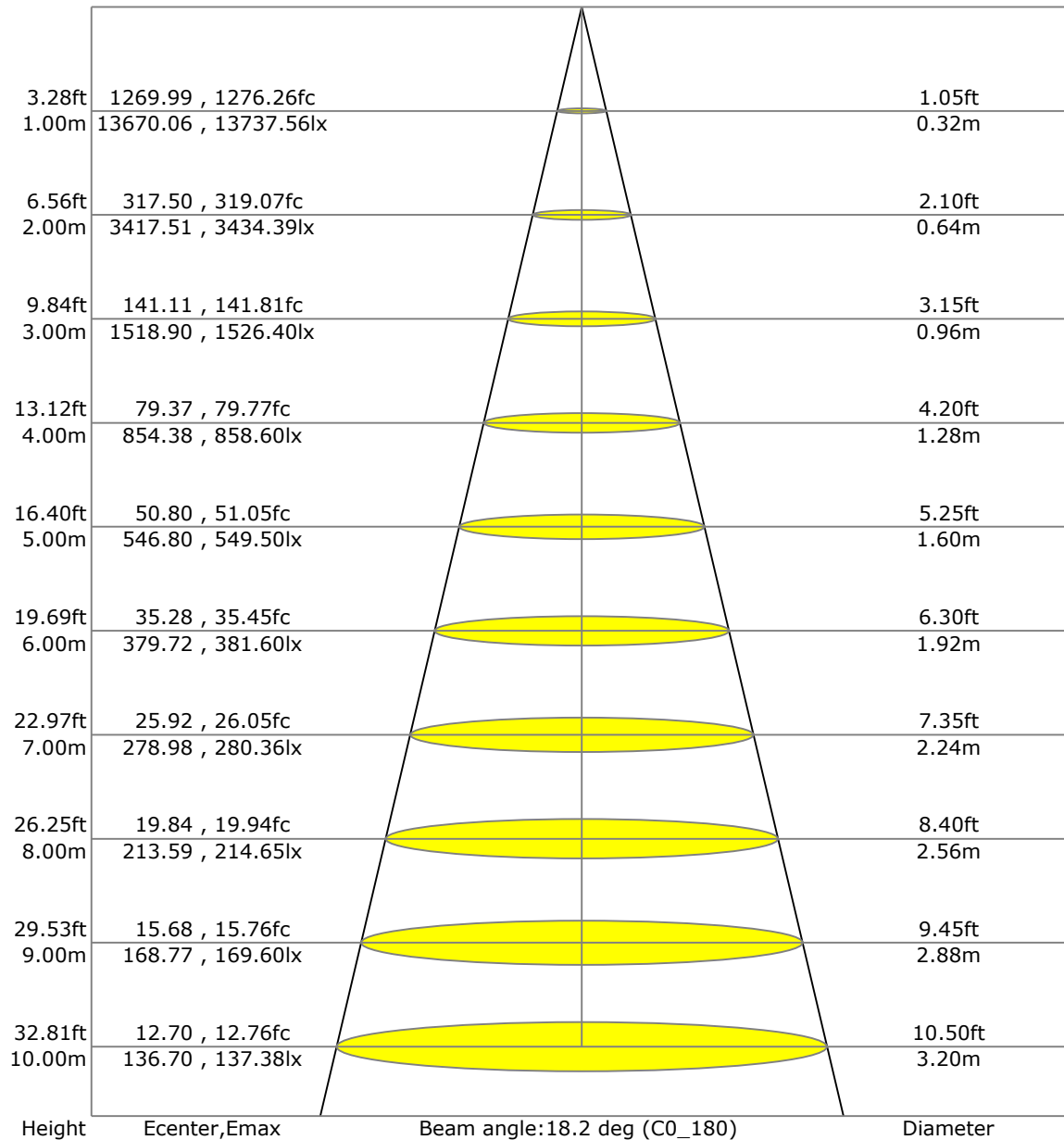
C Range: 0 - 360 Deg
C Interval: 45.0 Deg
Test Speed: High
Temperature: 7.76
Operators: 周奇
Test Date: 2021/3/17 16:44:40

G Range: 0 - 90 Deg
G Interval: 1.0 Deg
Test System: Huipu CPM-1800B Goniophotometer
Humidity: 1
Test Distance: 7.76 m
Remarks:

Report No.:

Test Time: 2021/3/17 16:44:40

LX-DISTANCE DIAGRAM



C Range: 0 - 360 Deg
C Interval: 45.0 Deg
Test Speed: High
Temperature: 7.76
Operators: 周奇
Test Date: 2021/3/17 16:44:40

G Range: 0 - 90 Deg
G Interval: 1.0 Deg
Test System: Huipu CPM-1800B Goniophotometer
Humidity: 1
Test Distance: 7.76 m
Remarks:

Report No.:

Test Time: 2021/3/17 16:44:40

UGR(Unified Glare Rating) TABLE

RHOCC	70	70	50	50	30	70	70	50	50	30
RHOW	70	70	50	50	30	70	70	50	50	30
RHOF	20	20	20	20	20	20	20	20	20	20
Room Size X Y	Viewed Endwise					Viewed Crosswise				
2H 2H	9.49	9.56	9.69	9.75	9.99	10.05	10.12	10.25	10.31	10.56
3H	9.58	9.66	9.79	9.86	10.10	10.12	10.20	10.33	10.39	10.64
4H	9.62	9.70	9.83	9.90	10.15	10.14	10.22	10.35	10.42	10.67
6H	9.63	9.71	9.85	9.91	10.17	10.15	10.23	10.37	10.43	10.69
8H	9.62	9.70	9.84	9.91	10.16	10.14	10.22	10.36	10.43	10.68
12H	9.61	9.70	9.84	9.90	10.16	10.13	10.21	10.36	10.42	10.68
4H 2H	11.49	11.57	11.70	11.76	12.01	12.09	12.17	12.31	12.37	12.62
3H	11.87	11.95	12.09	12.16	12.41	12.41	12.50	12.64	12.70	12.96
4H	12.04	12.12	12.27	12.33	12.59	12.55	12.64	12.78	12.85	13.11
6H	12.18	12.26	12.42	12.48	12.75	12.67	12.75	12.91	12.97	13.24
8H	12.23	12.31	12.47	12.54	12.81	12.71	12.79	12.96	13.02	13.29
12H	12.25	12.33	12.50	12.56	12.84	12.73	12.81	12.98	13.04	13.32
8H 4H	13.47	13.55	13.69	13.76	14.01	13.89	13.97	14.11	14.18	14.43
6H	14.99	15.07	15.25	15.31	15.59	15.26	15.34	15.52	15.58	15.86
8H	15.16	15.24	15.42	15.49	15.77	15.42	15.50	15.68	15.75	16.03
12H	15.30	15.38	15.58	15.64	15.92	15.55	15.63	15.83	15.89	16.17
12H 4H	15.81	15.89	16.06	16.13	16.40	16.02	16.10	16.27	16.34	16.61
6H	16.37	16.45	16.63	16.69	16.98	16.54	16.62	16.81	16.87	17.15

C Range: 0 - 360 Deg

C Interval: 45.0 Deg

Test Speed: High

Temperature: 7.76

Operators: 周奇

Test Date: 2021/3/17 16:44:40

G Range: 0 - 90 Deg

G Interval: 1.0 Deg

Test System: Huipu CPM-1800B Goniophotometer

Humidity: 1

Test Distance: 7.76 m

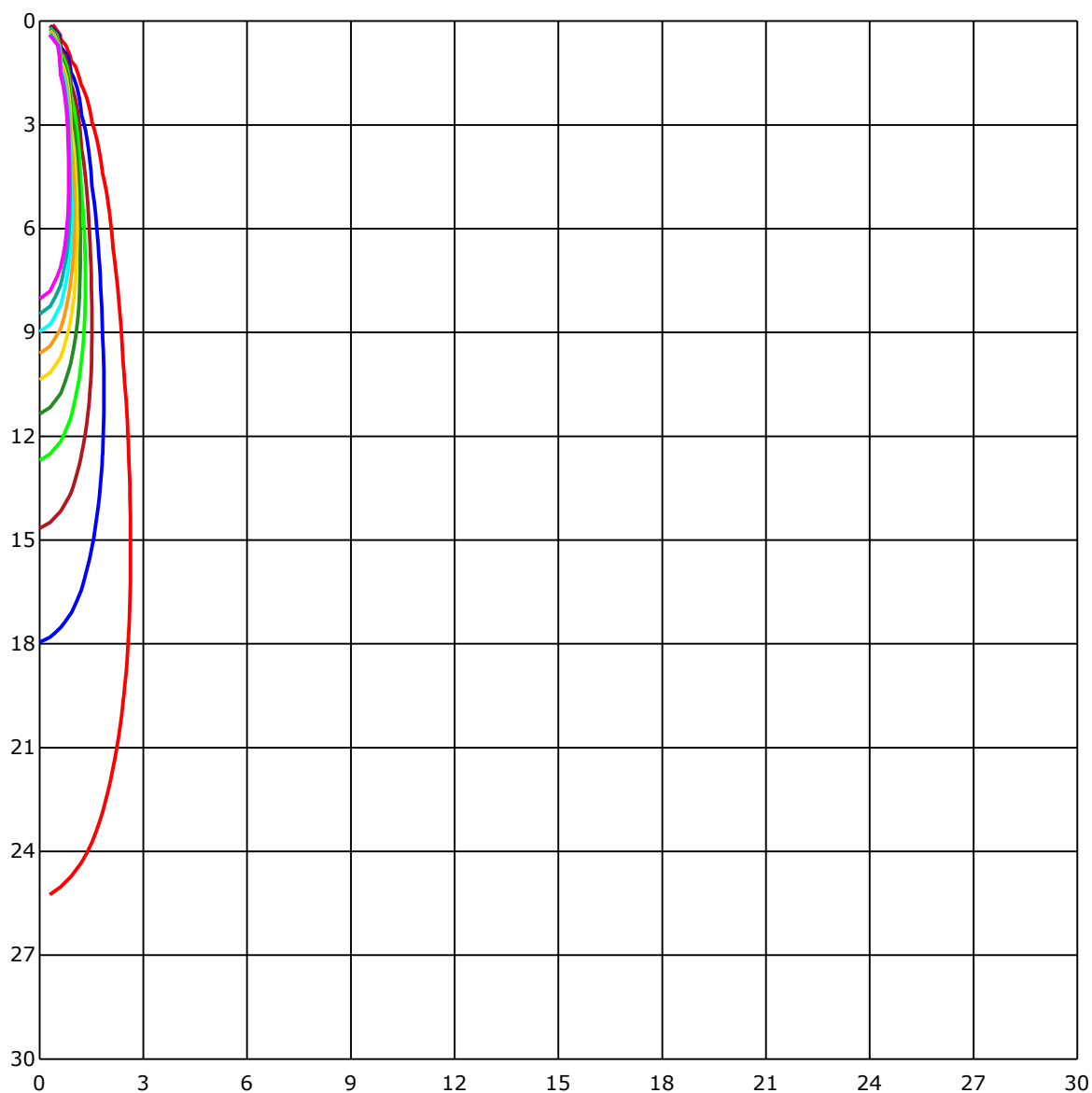
Remarks:

G Range: 0 - 90 Deg
G Interval: 1.0 Deg
Test System: Huipu CPM-1800B Goniophotometer
Humidity: 1
Test Distance: 7.76 m
Remarks:

Report No.:

Test Time: 2021/3/17 16:44:40

SPACE ISOLX DIAGRAM



Unit of illumination:lx

211.973	105.987
190.776	84.789
169.579	63.592
148.381	42.395
127.184	21.197

C Range: 0 - 360 Deg

C Interval: 45.0 Deg

Test Speed: High

Temperature: 7.76

Operators: 周奇

Test Date: 2021/3/17 16:44:40

G Range: 0 - 90 Deg

G Interval: 1.0 Deg

Test System: Huipu CPM-1800B Goniophotometer

Humidity: 1

Test Distance: 7.76 m

Remarks:

Report No.:

Test Time: 2021/3/17 16:44:40

LUMINOUS DISTRIBUTION INTENSITY DATA

Gamma\C	C0	C45	C90	C135	C180	C225	C270	C315	C360	
G0	13670.06	13529.87	13660.91	13729.37	13670.06	13529.87	13660.91	13729.37	13670.06	
G1	13444.06	13279.97	13606.35	13691.86	13737.56	13638.38	13574.61	13594.36	13444.06	
G2	13036.21	12833.28	13404.98	13512.59	13648.8	13597.19	13312.79	13315.92	13036.21	
G3	12501.96	12234.29	13044.64	13212.71	13402.09	13391.25	12905.6	12858.21	12501.96	
G4	11763.39	11396.78	12492.62	12726.93	12981.59	12988.64	12366.35	12243.98	11763.39	
G5	10736.44	10288.18	11678.12	11981.86	12381.16	12471.37	11575.99	11403.47	10736.44	
G6	9593.03	9081.06	10665.8	10984.71	11529.92	11767.06	10563.25	10371.04	9593.03	
G7	8392.53	7862.91	9477.41	9852.44	10457.69	10796.11	9425.2	9189.51	8392.53	
G8	7192.81	6670.67	8229.52	8626.29	9236.72	9615.13	8207.84	7938.07	7192.81	
G9	5977.2	5476.37	7000.06	7342.69	7999.91	8387.17	6969.83	6749.85	5977.2	
G10	4899.79	4460.92	5863.51	6144.06	6772.07	7147.29	5790.34	5650.58	4899.79	
G11	3979.0	3626.97	4800.73	5076.65	5587.17	5931.31	4739.79	4631.1	3979.0	
G12	3236.09	2959.76	3886.02	4137.55	4514.03	4788.99	3822.92	3724.94	3236.09	
G13	2622.36	2403.47	3151.79	3326.06	3641.6	3859.53	3067.61	3024.43	2622.36	
G14	2144.41	1974.23	2576.11	2700.94	2949.58	3106.27	2480.3	2476.09	2144.41	
G15	1764.86	1647.92	2090.51	2210.65	2398.17	2507.94	2015.54	2009.04	1764.86	
G16	1470.45	1384.52	1701.39	1807.01	1961.95	2036.92	1636.71	1614.25	1470.45	
G17	1232.47	1160.94	1396.39	1476.78	1644.12	1693.92	1331.89	1311.42	1232.47	
G18	1047.73	984.98	1159.19	1225.07	1396.93	1428.3	1091.63	1078.32	1047.73	
G19	896.94	837.99	961.01	1030.62	1195.14	1214.65	906.15	889.41	896.94	
G20	768.56	716.17	803.78	870.33	1020.69	1031.71	751.88	738.99	768.56	
G21	655.41	607.29	681.06	733.87	878.88	883.63	627.41	623.49	655.41	
G22	561.23	518.53	584.11	625.42	758.32	756.63	531.66	534.97	561.23	
G23	481.68	446.09	500.65	537.26	653.96	648.18	455.79	459.94	481.68	
G24	415.8	385.09	430.38	462.11	560.57	552.08	392.08	396.77	415.8	
G25	358.96	333.3	373.23	399.24	482.7	473.73	340.05	347.82	358.96	
G26	312.53	291.75	329.75	348.12	419.6	409.72	298.8	307.47	312.53	
G27	273.57	256.41	290.01	306.75	364.26	353.54	265.56	272.36	273.57	
G28	239.85	227.2	258.63	272.18	318.01	307.05	235.75	240.87	239.85	
G29	210.94	201.43	231.05	240.81	280.92	268.81	210.04	216.24	210.94	
G30	186.43	179.75	209.5	216.42	246.17	237.92	188.48	195.04	186.43	
G31	165.0	159.82	188.48	194.8	218.29	210.88	168.79	175.84	165.0	
G32	147.23	142.6	168.73	174.51	193.24	186.55	151.57	157.65	147.23	
G33	127.96	123.75	150.24	154.16	170.6	165.72	132.06	137.96	127.96	
G34	110.44	105.74	131.64	134.83	150.24	146.87	113.57	120.92	110.44	
G35	92.55	89.3	114.47	117.24	131.46	127.42	102.01	103.27	92.55	
G36	79.01	72.44	98.03	100.98	112.25	110.08	81.72	85.99	79.01	

C Range: 0 - 360 Deg

C Interval: 45.0 Deg

Test Speed: High

Temperature: 7.76

Operators: 周奇

Test Date: 2021/3/17 16:44:40

G Range: 0 - 90 Deg

G Interval: 1.0 Deg

Test System: Huipu CPM-1800B Goniophotometer

Humidity: 1

Test Distance: 7.76 m

Remarks:

Report No.:

Test Time: 2021/3/17 16:44:40

LUMINOUS DISTRIBUTION INTENSITY DATA(Continue 1)

Gamma\C	C0	C45	C90	C135	C180	C225	C270	C315	C360	
G37	62.93	59.8	80.15	83.82	94.12	91.89	69.43	71.54	62.93	
G38	53.83	50.94	68.29	69.79	80.87	77.38	57.21	61.18	53.83	
G39	48.29	44.8	58.83	59.13	65.1	64.19	49.32	54.02	48.29	
G40	41.07	40.17	50.46	50.7	56.06	54.62	43.72	48.66	41.07	
G41	38.0	36.73	45.1	44.38	49.26	48.66	38.84	43.48	38.0	
G42	33.24	33.18	40.47	39.44	43.78	43.66	34.87	38.42	33.24	
G43	29.63	29.51	38.3	36.01	39.14	38.42	31.37	34.38	29.63	
G44	27.94	27.94	33.48	33.0	35.41	34.26	28.12	31.49	27.94	
G45	25.29	25.83	31.49	29.33	32.4	30.83	26.86	28.96	25.29	
G46	23.55	23.91	29.15	28.0	29.45	28.42	24.09	28.0	23.55	
G47	22.76	22.76	27.88	25.95	27.88	27.76	22.76	25.17	22.76	
G48	20.11	20.65	25.77	24.03	25.89	24.63	20.59	23.36	20.11	
G49	18.67	19.39	24.09	22.82	24.03	23.0	19.33	22.58	18.67	
G50	17.7	18.25	22.88	21.32	22.76	22.16	18.13	20.47	17.7	
G51	17.76	17.7	21.62	19.87	21.5	20.11	17.64	19.33	17.76	
G52	18.61	17.64	20.11	18.97	19.99	19.03	17.58	18.31	18.61	
G53	16.38	18.61	19.27	18.07	18.97	18.07	18.67	17.7	16.38	
G54	14.51	17.94	18.49	17.64	18.13	17.58	16.74	17.64	14.51	
G55	13.85	15.24	18.01	17.52	17.64	17.52	14.81	17.7	13.85	
G56	13.19	14.45	17.7	17.88	17.58	18.37	14.15	18.73	13.19	
G57	12.83	13.91	17.7	18.85	18.01	17.94	13.49	17.88	12.83	
G58	12.53	13.43	17.58	17.94	18.49	15.36	13.07	15.54	12.53	
G59	12.59	13.07	17.7	16.2	18.43	14.57	12.89	14.69	12.59	
G60	12.47	12.77	18.25	15.17	16.62	14.09	12.59	14.09	12.47	
G61	12.53	12.65	18.61	14.63	15.11	13.49	12.59	13.67	12.53	
G62	12.47	12.47	18.19	14.21	14.51	13.07	12.59	13.25	12.47	
G63	12.22	12.47	17.22	13.85	14.03	12.71	12.4	12.95	12.22	
G64	11.62	12.34	15.11	13.43	13.85	12.47	12.53	12.71	11.62	
G65	11.08	12.47	14.69	12.95	13.31	12.59	12.53	12.4	11.08	
G66	9.88	9.94	13.97	12.77	13.07	12.59	11.5	12.47	9.88	
G67	9.45	9.51	13.13	12.53	12.71	12.4	9.33	10.24	9.45	
G68	9.21	9.39	11.14	10.0	12.59	11.14	9.15	9.88	9.21	
G69	9.09	9.27	10.48	9.7	10.96	10.0	8.97	9.76	9.09	
G70	9.03	9.15	10.3	9.39	10.48	9.82	8.85	9.57	9.03	
G71	8.97	9.03	10.06	9.39	10.18	9.7	8.73	9.51	8.97	
G72	8.97	8.97	9.88	9.27	10.12	9.57	8.61	9.57	8.97	
G73	8.91	8.91	9.76	9.21	9.88	9.51	8.55	9.39	8.91	

C Range: 0 - 360 Deg

C Interval: 45.0 Deg

Test Speed: High

Temperature: 7.76

Operators: 周奇

Test Date: 2021/3/17 16:44:40

G Range: 0 - 90 Deg

G Interval: 1.0 Deg

Test System: Huipu CPM-1800B Goniophotometer

Humidity: 1

Test Distance: 7.76 m

Remarks:

Remarks: