

LUMINOUS INTENSITY DISTRIBUTION DIAGRAM

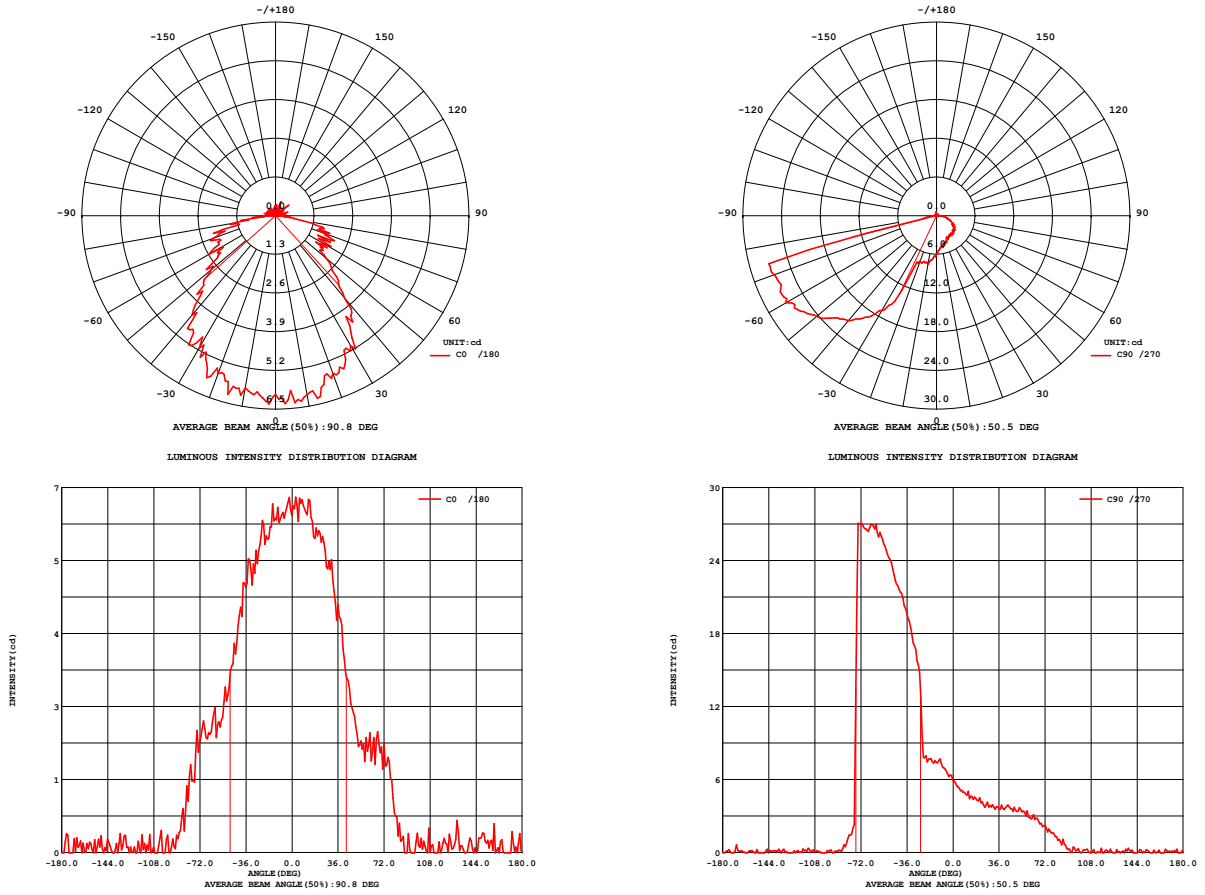


Fig. C0/C180

Fig. C90/C270

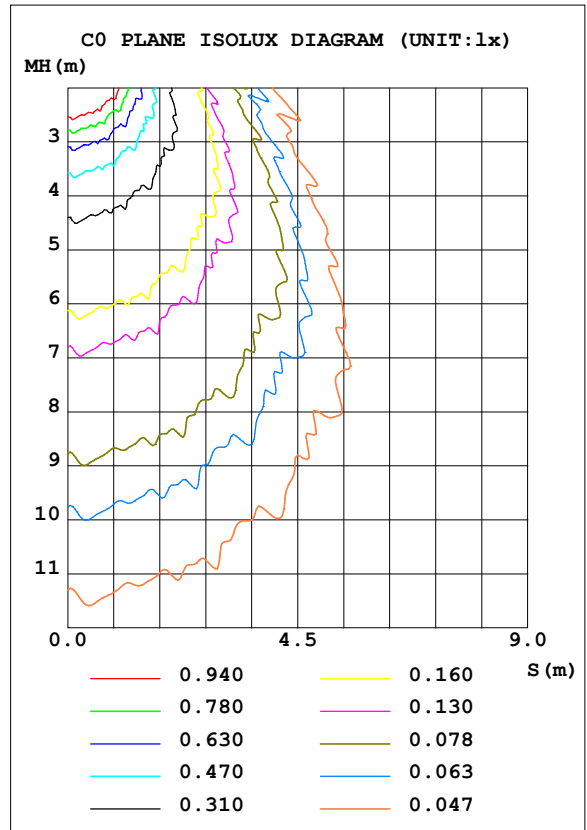
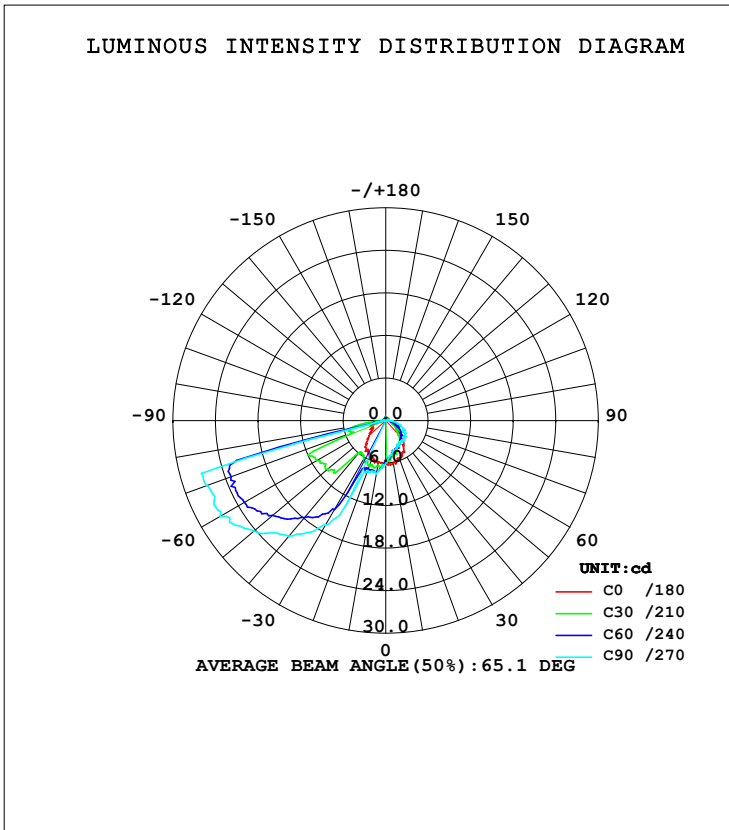
C Range: 0 - 360DEG
C Interval: 15.0DEG
Test Speed: HIGH
Temperature: 25.3DEG
Operators: hushuai
Test Date: 2016-05-14

γ Range: 0 - 180DEG
 γ Interval: 1.0DEG
Test System: EVERFINE GO-2000A SYSTEM V1.0.135
Humidity: 65.0%
Test Distance: 8.570m [K=1.0000]
Remarks:

LUMINAIRE PHOTOMETRIC TEST REPORT

NAME: RTM0101-1	TYPE:	WEIGHT:
DIMENSION:	SPECIFICATION:	SERIAL No.:
MANUFACTURER:	SURFACE:	PROTECTION ANGLE:

DATA OF LAMP		PHOTOMETRIC DATA			
MODEL	3000K	Imax (cd)	27.13	S/MH (C0/180)	1.20
NOMINAL POWER (W)	2	EFFICIENCY (%)	100.0	S/MH (C90/270)	3.43
RATED VOLTAGE (V)	220	TOTAL FLUX (lm)	39.924	η UP (C0-180)	0.8
NOMINAL FLUX (lm)	39.9	CIE CLASS	DIRECT	η DN (C0-180)	80.5
LAMPS INSIDE	1	η up (%)	1.7	η UP (C180-360)	0.9
TEST VOLTAGE (V)	220.2	η down (%)	98.3	η DN (C180-360)	17.8



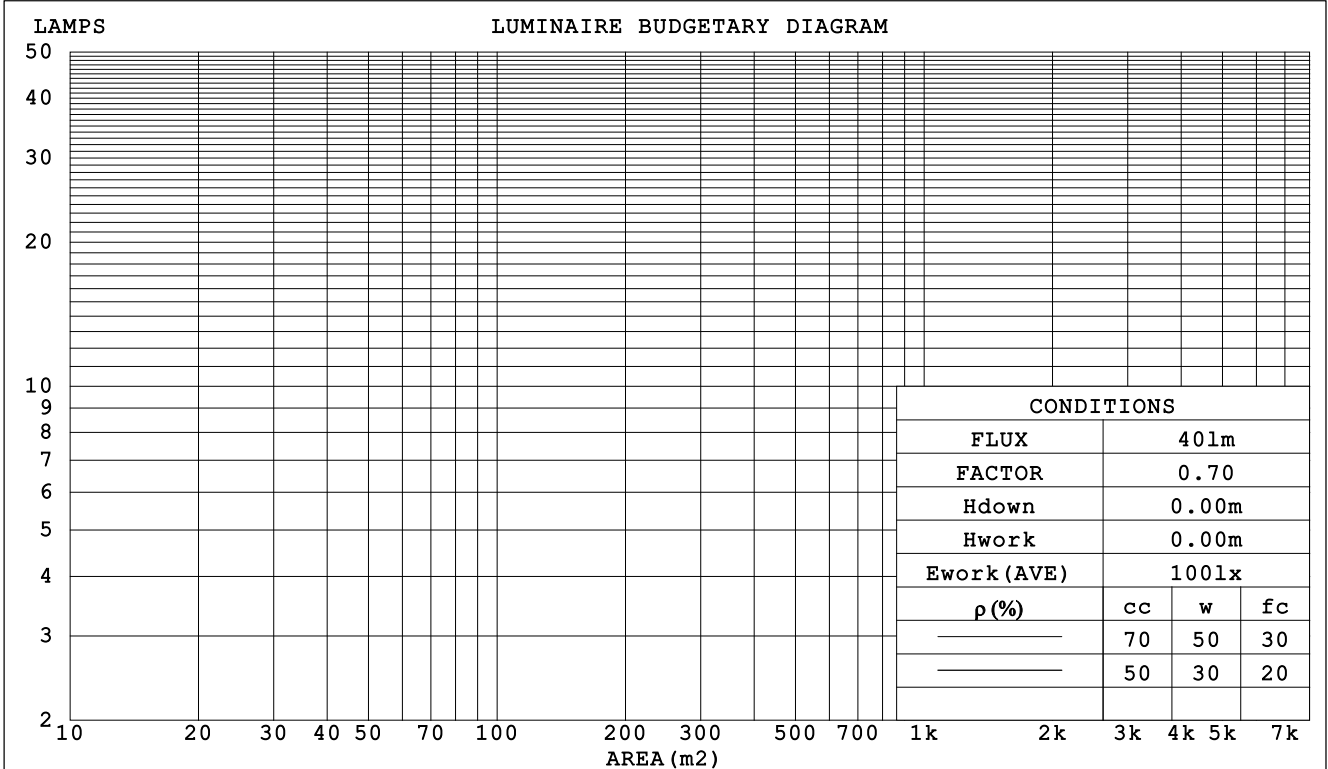
C Range: 0 - 360DEG
C Interval: 15.0DEG
Test Speed: HIGH
Temperature: 25.3DEG
Operators: hushuai
Test Date: 2016-05-14

γ Range: 0 - 180DEG
γ Interval: 1.0DEG
Test System: EVERFINE GO-2000A SYSTEM V1.0.135
Humidity: 65.0%
Test Distance: 8.570m [K=1.0000]
Remarks:

CU AND LUMINAIRE BUDGETARY ESTIMATE DIAGRAM

NAME: RTM0101-1	TYPE:	WEIGHT:
DIMENSION:	SPECIFICATION:	SERIAL No.:
MANUFACTURER:	SURFACE:	PROTECTION ANGLE:

ρcc	80%			70%			50%			30%			10%			0
ρw	50%	30%	10%	50%	30%	10%	50%	30%	10%	50%	30%	10%	50%	30%	10%	0
ρfc	20%			20%			20%			20%			20%			0
RCR	RCR:Room Cavity Ratio						Coefficients of Utilization(CU)									
0.0	1.19	1.19	1.19	1.16	1.16	1.16	1.10	1.10	1.10	1.05	1.05	1.05	1.00	1.00	1.00	.98
1.0	1.00	.95	.90	.98	.93	.89	.93	.89	.86	.89	.86	.83	.85	.82	.80	.77
2.0	.84	.76	.69	.82	.74	.68	.78	.71	.66	.74	.69	.64	.71	.66	.62	.60
3.0	.71	.61	.54	.69	.60	.53	.66	.58	.52	.63	.56	.51	.60	.54	.49	.47
4.0	.61	.51	.43	.60	.50	.42	.57	.48	.42	.54	.47	.41	.52	.45	.40	.37
5.0	.53	.43	.35	.52	.42	.35	.49	.41	.34	.47	.40	.34	.45	.38	.33	.31
6.0	.47	.37	.29	.46	.36	.29	.44	.35	.29	.42	.34	.28	.40	.33	.28	.25
7.0	.42	.32	.25	.41	.31	.25	.39	.31	.24	.37	.30	.24	.36	.29	.24	.21
8.0	.38	.28	.22	.37	.28	.21	.35	.27	.21	.34	.26	.21	.32	.26	.21	.18
9.0	.34	.25	.19	.33	.25	.19	.32	.24	.18	.31	.23	.18	.30	.23	.18	.16
10.0	.31	.22	.17	.30	.22	.16	.29	.22	.16	.28	.21	.16	.27	.21	.16	.14



C Range: 0 - 360DEG
C Interval: 15.0DEG
Test Speed: HIGH
Temperature: 25.3DEG
Operators: hushuai
Test Date: 2016-05-14

γ Range: 0 - 180DEG
γ Interval: 1.0DEG
Test System: EVERFINE GO-2000A SYSTEM V1.0.135
Humidity: 65.0%
Test Distance: 8.570m [K=1.0000]
Remarks:

ZONAL FLUX DIAGRAM

ZONAL FLUX DIAGRAM:

γ	C0	C45	C90	C135	C180	C225	C270	C315	γ	Φ zone	Φ total
5	6.057	6.780	6.673	6.608	5.893	5.296	5.285	5.193	0- 5	0.092	0.092
10	5.870	7.030	7.693	6.952	6.109	5.131	4.786	4.644	5- 10	0.320	0.412
15	6.208	6.985	7.356	7.198	5.963	4.758	4.597	4.642	10- 15	0.544	0.956
20	5.637	7.089	7.445	7.057	5.636	4.405	4.235	4.466	15- 20	0.754	1.709
25	5.471	6.671	12.72	7.231	5.523	3.986	3.715	4.122	20- 25	0.946	2.656
30	5.133	6.995	16.98	7.720	5.036	3.700	3.736	3.864	25- 30	1.324	3.980
35	4.797	12.97	19.22	13.54	4.133	3.529	3.781	3.746	30- 35	1.743	5.723
40	4.367	14.61	21.27	15.26	3.622	2.959	3.536	3.407	35- 40	2.117	7.841
45	3.724	15.88	22.38	16.56	2.913	2.624	3.625	3.192	40- 45	2.461	10.30
50	2.807	16.28	24.23	17.05	2.229	2.402	3.365	2.566	45- 50	2.810	13.11
55	2.362	17.04	25.78	17.35	1.837	2.030	3.393	2.711	50- 55	3.063	16.17
60	2.583	17.45	26.98	17.62	1.917	1.547	2.875	1.949	55- 60	3.315	19.49
65	2.134	18.22	26.68	18.35	1.569	1.378	2.838	1.742	60- 65	3.540	23.03
70	2.213	17.31	26.80	9.450	1.881	0.904	2.129	1.371	65- 70	3.482	26.51
75	1.825	4.266	20.44	2.240	1.696	0.733	1.924	1.097	70- 75	2.957	29.47
80	1.352	2.502	1.423	1.580	0.729	0.253	1.325	0.775	75- 80	1.207	30.67
85	0.782	0.678	0.641	0.483	0.204	0.416	0.655	0.175	80- 85	0.441	31.12
90	0.312	0	0.114	0.166	0	0.274	0.260	0	85- 90	0.171	31.29
95	0	0.079	0.210	0	0	0	0.390	0.169	90- 95	0.059	31.35
100	0	0	0	0.243	0.095	0.115	0	0.171	95-100	0.057	31.40
105	0	0.106	0.060	0.079	0.032	0	0.284	0	100-105	0.045	31.45
110	0	0.067	0.147	0	0.137	0	0.251	0.007	105-110	0.041	31.49
115	0.160	0.098	0.190	0.373	0.192	0	0.019	0.282	110-115	0.041	31.53
120	0.205	0.248	0.039	0	0.166	0	0.203	0.138	115-120	0.036	31.57
125	0.003	0.082	0	0.266	0.068	0.006	0	0	120-125	0.029	31.59
130	0.311	0	0.101	0	0.368	0.084	0.084	0.084	125-130	0.036	31.63
135	0.163	0	0.128	0.281	0	0.156	0.274	0.156	130-135	0.039	31.67
140	0	0	0.161	0.283	0.213	0	0.187	0.159	135-140	0.033	31.70
145	0.037	0.221	0.285	0	0.029	0.303	0.040	0.071	140-145	0.032	31.74
150	0.101	0.052	0	0.102	0.338	0.389	0.019	0.069	145-150	0.023	31.76
155	0	0.284	0	0	0.194	0	0	0.022	150-155	0.021	31.78
160	0.160	0.071	0.022	0.179	0.035	0.018	0.078	0	155-160	0.020	31.80
165	0.208	0.221	0.164	0	0.014	0.208	0	0.088	160-165	0.014	31.81
170	0.248	0.147	0.147	0.223	0	0.053	0.059	0.303	165-170	0.012	31.83
175	0.312	0.345	0.258	0.314	0.098	0	0.269	0	170-175	0.006	31.83
180	0	0	0	0	0	0.227	0	0	175-180	0.003	31.83
DEG	LUMINOUS INTENSITY:cd									UNIT:lm	

C Range: 0 - 360DEG
C Interval: 15.0DEG
Test Speed: HIGH
Temperature:25.3DEG
Operators:hushuai
Test Date:2016-05-14

γ Range: 0 - 180DEG
 γ Interval: 1.0DEG
Test System:EVERFINE GO-2000A SYSTEM V1.0.135
Humidity:65.0%
Test Distance:8.570m [K=1.0000]
Remarks:

WEC AND CCEC

NAME: RTM0101-1	TYPE:	WEIGHT:
DIMENSION:	SPECIFICATION:	SERIAL No.:
MANUFACTURER:	SURFACE:	PROTECTION ANGLE:

ρ_{cc}	80%			70%			50%			30%			10%			0
ρ_w	50%	30%	10%	50%	30%	10%	50%	30%	10%	50%	30%	10%	50%	30%	10%	0
ρ_{fc}	20%			20%			20%			20%			20%			0
RCR	RCR:Room Cavity Ratio						Wall Exitance Coefficients (WEC)									
0.0																
1.0	.300	.171	.054	.294	.168	.053	.283	.162	.052	.272	.157	.050	.262	.152	.049	
2.0	.282	.154	.047	.276	.152	.047	.266	.148	.046	.256	.144	.045	.247	.140	.044	
3.0	.257	.137	.041	.252	.135	.041	.243	.132	.040	.234	.128	.039	.226	.125	.039	
4.0	.234	.121	.036	.229	.120	.035	.221	.117	.035	.213	.114	.034	.206	.112	.034	
5.0	.213	.108	.031	.209	.107	.031	.201	.105	.031	.194	.102	.030	.188	.100	.030	
6.0	.195	.098	.028	.191	.097	.028	.184	.095	.027	.178	.093	.027	.172	.091	.027	
7.0	.179	.089	.025	.176	.088	.025	.170	.086	.025	.164	.084	.024	.159	.083	.024	
8.0	.166	.081	.023	.163	.080	.023	.157	.079	.022	.152	.077	.022	.147	.076	.022	
9.0	.154	.074	.021	.151	.074	.021	.146	.072	.021	.142	.071	.020	.137	.070	.020	
10.0	.143	.069	.019	.141	.068	.019	.137	.067	.019	.132	.066	.019	.129	.065	.019	

ρ_{cc}	80%			70%			50%			30%			10%			0
ρ_w	50%	30%	10%	50%	30%	10%	50%	30%	10%	50%	30%	10%	50%	30%	10%	0
ρ_{fc}	20%			20%			20%			20%			20%			0
RCR	RCR:Room Cavity Ratio						Ceiling Cavity Exitance Coefficients (CCEC)									
0.0																
1.0	.162	.162	.162	.139	.139	.139	.095	.095	.095	.054	.054	.054	.017	.017	.017	
2.0	.155	.116	.083	.132	.099	.072	.091	.069	.050	.052	.040	.029	.017	.013	.010	
3.0	.150	.102	.064	.129	.088	.055	.088	.061	.039	.051	.036	.023	.016	.012	.008	
4.0	.144	.092	.052	.124	.080	.045	.085	.055	.032	.049	.032	.019	.016	.011	.006	
5.0	.138	.084	.044	.119	.073	.038	.082	.051	.027	.047	.030	.016	.015	.010	.005	
6.0	.132	.078	.038	.114	.067	.034	.079	.047	.024	.046	.028	.014	.015	.009	.005	
7.0	.127	.072	.034	.109	.063	.030	.075	.044	.021	.044	.026	.013	.014	.008	.004	
8.0	.121	.068	.031	.104	.059	.027	.072	.041	.019	.042	.024	.012	.014	.008	.004	
9.0	.115	.064	.029	.099	.056	.025	.069	.039	.018	.040	.023	.011	.013	.008	.004	
10.0	.110	.061	.027	.095	.053	.024	.066	.037	.017	.039	.022	.010	.012	.007	.003	

C Range: 0 - 360DEG
C Interval: 15.0DEG
Test Speed: HIGH
Temperature:25.3DEG
Operators:hushuai
Test Date:2016-05-14

γ Range: 0 - 180DEG
γ Interval: 1.0DEG
Test System:EVERFINE GO-2000A SYSTEM V1.0.135
Humidity:65.0%
Test Distance:8.570m [K=1.0000]
Remarks:

Uncorrected UGR Table

NAME: RTM0101-1						TYPE:					WEIGHT:				
DIMENSION:						SPECIFICATION:					SERIAL No.:				
MANUFACTURER:						SURFACE:					PROTECTION ANGLE:				
ceiling/cavity	0.7	0.7	0.5	0.5	0.3	0.7	0.7	0.5	0.5	0.3	0.7	0.7	0.5	0.5	0.3
walls	0.5	0.3	0.5	0.3	0.3	0.5	0.3	0.5	0.3	0.3	0.5	0.3	0.5	0.3	0.3
working plane	0.2	0.2	0.2	0.2	0.2	0.2	0.2	0.2	0.2	0.2	0.2	0.2	0.2	0.2	0.2
Room dimensions	Viewed crosswise					Viewed endwise									
x = 2H y = 2H	27.8	29.6	28.1	29.8	30.1	36.1	37.8	36.4	38.1	38.4	36.1	37.8	36.4	38.1	38.4
3H	28.8	30.5	29.2	30.7	31.0	39.7	41.3	40.0	41.6	41.9	39.7	41.3	40.0	41.6	41.9
4H	29.4	31.0	29.8	31.3	31.6	41.3	42.8	41.6	43.1	43.4	41.3	42.8	41.6	43.1	43.4
6H	29.9	31.4	30.3	31.7	32.1	41.2	42.6	41.5	43.0	43.3	41.2	42.6	41.5	43.0	43.3
8H	30.1	31.5	30.5	31.9	32.2	41.1	42.5	41.5	42.9	43.2	41.1	42.5	41.5	42.9	43.2
12H	30.2	31.5	30.5	31.9	32.2	41.0	42.4	41.4	42.8	43.1	41.0	42.4	41.4	42.8	43.1
4H 2H	32.3	33.9	32.7	34.2	34.5	36.7	38.2	37.0	38.5	38.8	36.7	38.2	37.0	38.5	38.8
3H	33.0	34.4	33.4	34.7	35.1	40.5	41.9	40.9	42.2	42.6	40.5	41.9	40.9	42.2	42.6
4H	33.5	34.7	33.9	35.1	35.5	42.2	43.5	42.6	43.8	44.2	42.2	43.5	42.6	43.8	44.2
6H	33.9	35.1	34.4	35.5	35.9	42.1	43.3	42.6	43.6	44.1	42.1	43.3	42.6	43.6	44.1
8H	34.1	35.1	34.5	35.5	35.9	42.1	43.1	42.5	43.5	44.0	42.1	43.1	42.5	43.5	44.0
12H	34.1	35.1	34.6	35.5	35.9	42.1	43.0	42.5	43.4	43.9	42.1	43.0	42.5	43.4	43.9
8H 4H	35.0	36.1	35.5	36.5	36.9	42.2	43.2	42.6	43.6	44.1	42.2	43.2	42.6	43.6	44.1
6H	35.6	36.5	36.1	36.9	37.4	42.1	43.0	42.6	43.4	43.9	42.1	43.0	42.6	43.4	43.9
8H	35.8	36.6	36.3	37.1	37.6	42.1	42.9	42.6	43.3	43.8	42.1	42.9	42.6	43.3	43.8
12H	35.9	36.6	36.4	37.1	37.6	42.1	42.7	42.6	43.2	43.7	42.1	42.7	42.6	43.2	43.7
12H 4H	35.0	36.0	35.5	36.4	36.8	42.1	43.1	42.6	43.5	44.0	42.1	43.1	42.6	43.5	44.0
6H	35.6	36.4	36.1	36.9	37.4	42.1	42.9	42.6	43.3	43.8	42.1	42.9	42.6	43.3	43.8
8H	35.9	36.6	36.4	37.0	37.6	42.1	42.7	42.6	43.2	43.7	42.1	42.7	42.6	43.2	43.7
Variations with the observer position at spacings:															
S = 1.0H	+ 0.4 / - 0.3					+ 0.3 / - 0.3									
1.5H	+ 0.4 / - 0.5					+ 0.3 / - 0.6									
2.0H	+ 0.9 / - 1.4					+ 1.1 / - 1.0									

CIE Pub.117 Corrected 39.92 lm Total Lamp Luminous Flux. (8log(F/F0) = -11.2)

C Range: 0 - 360DEG
C Interval: 15.0DEG
Test Speed: HIGH
Temperature:25.3DEG
Operators:hushuai
Test Date:2016-05-14

γ Range: 0 - 180DEG
γ Interval: 1.0DEG
Test System:EVERFINE GO-2000A SYSTEM V1.0.135
Humidity:65.0%
Test Distance:8.570m [K=1.0000]
Remarks:

UTILIZATION FACTORS TABLE

NAME: RTM0101-1	TYPE:	WEIGHT:
DIMENSION:	SPECIFICATION:	SERIAL No.:
MANUFACTURER:	SURFACE:	PROTECTION ANGLE:

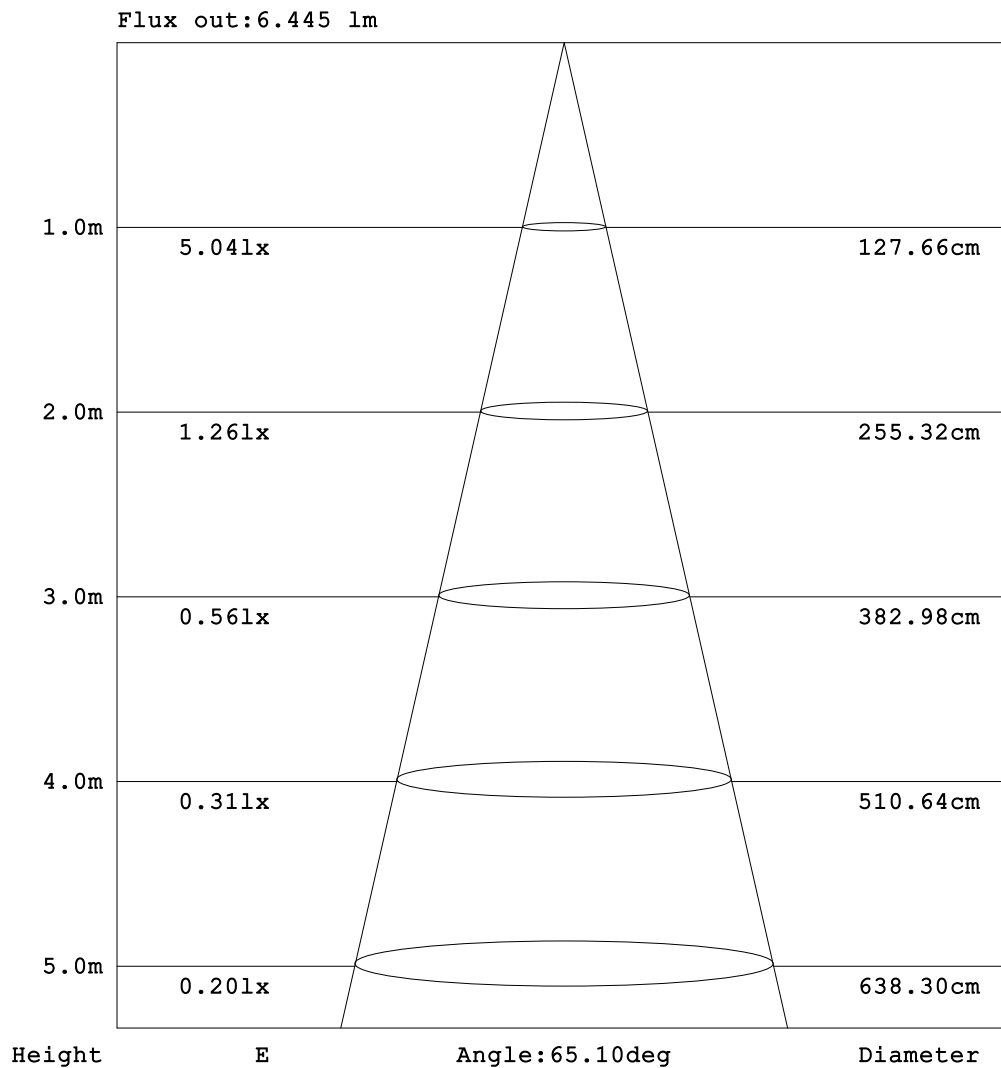
REFLECTANCE										
Ceiling	0.8	0.8	0.8	0.7	0.7	0.7	0.5	0.5	0.5	0
Walls	0.7	0.5	0.3	0.7	0.5	0.3	0.7	0.5	0.3	0
Working plane	0.2	0.2	0.2	0.2	0.2	0.2	0.2	0.2	0.2	0
ROOM INDEX	UTILIZATION FACTORS (PERCENT) k(RI) x RCR = 5									
k = 0.60	37	26	20	36	26	20	35	26	20	14
0.80	45	34	27	44	33	27	42	33	26	20
1.00	52	41	34	51	40	34	49	42	33	26
1.25	58	48	40	57	47	40	54	46	39	32
1.50	63	53	46	61	52	45	58	50	44	37
2.00	70	61	54	68	60	54	65	58	52	45
2.50	74	66	60	72	65	59	68	62	57	50
3.00	77	70	65	75	69	64	72	66	62	54
4.00	82	76	71	79	74	70	76	71	68	60
5.00	84	79	75	82	78	74	78	75	71	63
ROOM INDEX	UF(total)									Direct
According to DIN EN 13032-2 2004			Suspended				SHRNOM = 1.25			

C Range: 0 - 360DEG
C Interval: 15.0DEG
Test Speed: HIGH
Temperature: 25.3DEG
Operators: hushuai
Test Date: 2016-05-14

γ Range: 0 - 180DEG
 γ Interval: 1.0DEG
Test System: EVERFINE GO-2000A SYSTEM V1.0.135
Humidity: 65.0%
Test Distance: 8.570m [K=1.0000]
Remarks:

AAI Figure

NAME: RTM0101-1	TYPE:	WEIGHT:
DIMENSION:	SPECIFICATION:	SERIAL No.:
MANUFACTURER:	SURFACE:	PROTECTION ANGLE:



Note:The Curves indicate the illuminated area and the average illumination when the luminaire is at different distance.

C Range: 0 - 360DEG
C Interval: 15.0DEG
Test Speed: HIGH
Temperature:25.3DEG
Operators:hushuai
Test Date:2016-05-14

γ Range: 0 - 180DEG
 γ Interval: 1.0DEG
Test System:EVERFINE GO-2000A SYSTEM V1.0.135
Humidity:65.0%
Test Distance:8.570m [K=1.0000]
Remarks:

LUMINOUS DISTRIBUTION INTENSITY DATA

NAME: RTM0101-1	TYPE:	WEIGHT:
DIMENSION:	SPECIFICATION:	SERIAL No.:
MANUFACTURER:	SURFACE:	PROTECTION ANGLE:

Table--1

UNIT: cd

C (DEG) \ γ (DEG)	0	15	30	45	60	75	90	105	120	135	150	165	180	195	210	225	240	255	270
0	6.00	5.84	5.85	5.98	5.88	6.01	5.94	5.68	5.62	5.80	5.81	5.73	6.00	5.84	5.85	5.98	5.88	6.01	5.94
5	6.05	6.39	6.31	6.78	6.75	6.96	6.67	6.49	6.63	6.60	6.15	5.98	5.89	6.10	5.57	5.29	5.30	5.37	5.28
10	5.87	6.36	6.53	7.03	7.39	7.43	7.69	7.39	7.17	6.95	6.92	6.38	6.10	5.82	5.13	5.13	4.92	5.26	4.78
15	6.20	6.35	6.76	6.98	7.24	7.19	7.35	7.79	7.59	7.19	6.86	6.23	5.96	5.47	4.67	4.75	4.73	4.60	4.59
20	5.63	6.39	6.83	7.08	7.19	7.34	7.44	7.72	7.58	7.05	6.88	5.94	5.63	5.33	4.60	4.40	4.43	4.32	4.23
25	5.47	5.96	6.47	6.67	7.34	12.3	12.7	12.2	7.83	7.23	6.84	6.04	5.52	4.63	4.22	3.98	4.31	4.14	3.71
30	5.13	5.62	6.16	6.99	14.5	16.6	16.9	16.5	14.4	7.72	6.15	5.55	5.03	4.08	3.90	3.70	3.76	3.98	3.73
35	4.79	5.31	5.73	12.9	16.5	18.7	19.2	18.8	16.9	13.5	6.05	5.10	4.13	3.85	3.50	3.52	3.62	3.86	3.78
40	4.36	4.64	5.92	14.6	17.8	20.2	21.2	20.9	18.7	15.2	6.50	4.23	3.62	3.46	3.27	2.95	3.51	3.50	3.53
45	3.72	4.00	10.4	15.8	19.7	22.6	22.3	22.2	20.2	16.5	10.4	3.32	2.91	2.50	2.38	2.62	2.98	3.42	3.62
50	2.80	3.57	10.6	16.2	20.8	23.9	24.2	24.1	21.6	17.0	10.7	2.65	2.22	1.97	1.89	2.40	2.69	3.05	3.36
55	2.36	3.23	10.6	17.0	22.1	25.1	25.7	25.4	22.4	17.3	10.6	2.73	1.83	1.60	1.76	2.03	2.56	3.28	3.39
60	2.58	3.72	11.2	17.4	23.0	26.1	26.9	26.3	23.4	17.6	11.2	5.26	1.91	1.46	1.30	1.54	2.10	2.91	2.87
65	2.13	3.86	11.7	18.2	23.3	26.1	26.6	26.8	23.6	18.3	11.1	2.78	1.56	1.13	1.17	1.37	1.99	2.45	2.83
70	2.21	3.91	4.80	17.3	23.2	26.1	26.8	26.6	23.4	9.45	2.92	2.56	1.88	1.02	0.79	0.90	1.40	1.94	2.12
75	1.82	3.64	5.32	4.26	21.7	19.8	20.4	19.8	22.0	2.24	3.29	2.39	1.69	1.31	0.86	0.73	0.95	1.69	1.92
80	1.35	2.95	4.42	2.50	1.64	0.99	1.42	1.45	1.44	1.58	1.99	1.74	0.73	0.41	0.39	0.25	0.47	1.25	1.32
85	0.78	1.06	1.45	0.68	0.60	0.57	0.64	0.61	0.59	0.48	0.76	0.80	0.20	0.20	0.20	0.42	0.67	0.89	0.66
90	0.31	0.00	0.37	0.00	0.02	0.06	0.11	0.14	0.12	0.17	0.10	0.12	0.00	0.03	0.24	0.27	0.07	0.19	0.26
95	0.00	0.07	0.29	0.08	0.25	0.25	0.21	0.00	0.01	0.00	0.30	0.00	0.00	0.00	0.14	0.00	0.00	0.09	0.39
100	0.00	0.00	0.26	0.00	0.28	0.00	0.00	0.34	0.40	0.24	0.07	0.00	0.09	0.18	0.14	0.11	0.27	0.12	0.00
105	0.00	0.18	0.00	0.11	0.04	0.08	0.06	0.22	0.06	0.08	0.28	0.00	0.03	0.22	0.00	0.00	0.20	0.05	0.28
110	0.00	0.10	0.31	0.07	0.00	0.00	0.15	0.25	0.19	0.00	0.33	0.00	0.14	0.00	0.13	0.00	0.17	0.00	0.25
115	0.16	0.00	0.00	0.10	0.00	0.01	0.19	0.01	0.00	0.37	0.00	0.00	0.19	0.22	0.27	0.00	0.19	0.00	0.02
120	0.20	0.00	0.09	0.25	0.00	0.00	0.04	0.07	0.00	0.00	0.00	0.00	0.17	0.21	0.19	0.00	0.07	0.06	0.20
125	0.00	0.11	0.00	0.08	0.19	0.05	0.00	0.37	0.31	0.27	0.00	0.04	0.07	0.00	0.00	0.01	0.34	0.21	0.00
130	0.31	0.00	0.08	0.00	0.10	0.00	0.10	0.03	0.04	0.00	0.00	0.19	0.37	0.03	0.36	0.08	0.02	0.33	0.08
135	0.16	0.00	0.00	0.00	0.12	0.00	0.13	0.00	0.17	0.28	0.08	0.20	0.00	0.05	0.05	0.16	0.00	0.10	0.27
140	0.00	0.00	0.02	0.00	0.36	0.06	0.16	0.12	0.15	0.28	0.25	0.20	0.21	0.02	0.00	0.00	0.15	0.11	0.19
145	0.04	0.03	0.00	0.22	0.00	0.13	0.29	0.06	0.30	0.00	0.17	0.22	0.03	0.13	0.14	0.30	0.00	0.00	0.04
150	0.10	0.04	0.09	0.05	0.10	0.28	0.00	0.03	0.14	0.10	0.36	0.54	0.34	0.00	0.24	0.39	0.00	0.19	0.02
155	0.00	0.00	0.26	0.28	0.05	0.08	0.00	0.05	0.00	0.00	0.00	0.00	0.19	0.00	0.11	0.00	0.19	0.05	0.00
160	0.16	0.11	0.00	0.07	0.21	0.19	0.02	0.07	0.25	0.18	0.00	0.25	0.03	0.46	0.00	0.02	0.14	0.36	0.08
165	0.21	0.00	0.00	0.22	0.17	0.02	0.16	0.19	0.22	0.00	0.13	0.01	0.01	0.00	0.01	0.21	0.44	0.13	0.00
170	0.25	0.23	0.19	0.15	0.04	0.00	0.15	0.10	0.07	0.22	0.00	0.12	0.00	0.40	0.04	0.05	0.00	0.21	0.06
175	0.31	0.08	0.15	0.35	0.00	0.00	0.26	0.00	0.26	0.31	0.00	0.31	0.10	0.09	0.06	0.00	0.16	0.00	0.27
180	0.00	0.00	0.33	0.00	0.10	0.19	0.00	0.00	0.28	0.00	0.00	0.00	0.00	0.00	0.00	0.23	0.12	0.00	0.00

C Range: 0 - 360DEG
C Interval: 15.0DEG
Test Speed: HIGH
Temperature:25.3DEG
Operators:hushuai
Test Date:2016-05-14

γ Range: 0 - 180DEG
γ Interval: 1.0DEG
Test System:EVERFINE GO-2000A SYSTEM V1.0.135
Humidity:65.0%
Test Distance:8.570m [K=1.0000]
Remarks:

LUMINOUS DISTRIBUTION INTENSITY DATA

NAME: RTM0101-1	TYPE:	WEIGHT:
DIMENSION:	SPECIFICATION:	SERIAL No.:
MANUFACTURER:	SURFACE:	PROTECTION ANGLE:

Table--2

UNIT: cd

C (DEG) γ (DEG)	285	300	315	330	345														
0	5.68	5.62	5.80	5.81	5.73														
5	5.28	5.18	5.19	5.27	5.66														
10	4.85	4.97	4.64	4.95	4.95														
15	4.35	4.49	4.64	4.74	5.14														
20	4.10	4.55	4.46	4.36	4.83														
25	4.12	4.11	4.12	4.03	4.44														
30	3.79	4.03	3.86	4.11	4.15														
35	3.74	3.95	3.74	3.88	3.73														
40	3.91	3.44	3.40	3.10	3.42														
45	3.36	3.32	3.19	2.83	3.12														
50	3.40	3.01	2.56	2.64	2.44														
55	3.37	3.13	2.71	1.97	2.17														
60	3.01	2.38	1.94	1.52	1.49														
65	2.70	1.99	1.74	1.75	1.27														
70	2.14	1.86	1.37	1.17	1.32														
75	1.96	1.25	1.09	0.80	0.58														
80	1.27	0.80	0.78	0.46	0.54														
85	0.75	0.66	0.18	0.47	0.10														
90	0.25	0.00	0.00	0.10	0.08														
95	0.00	0.21	0.17	0.00	0.22														
100	0.15	0.32	0.17	0.00	0.13														
105	0.27	0.00	0.00	0.07	0.18														
110	0.37	0.47	0.01	0.00	0.14														
115	0.00	0.26	0.28	0.14	0.00														
120	0.03	0.07	0.14	0.24	0.09														
125	0.00	0.14	0.00	0.10	0.31														
130	0.00	0.18	0.08	0.03	0.32														
135	0.17	0.03	0.16	0.02	0.23														
140	0.32	0.26	0.16	0.20	0.25														
145	0.34	0.00	0.07	0.07	0.23														
150	0.00	0.50	0.07	0.00	0.00														
155	0.33	0.00	0.02	0.19	0.00														
160	0.24	0.04	0.00	0.00	0.19														
165	0.05	0.04	0.09	0.02	0.35														
170	0.00	0.00	0.30	0.00	0.09														
175	0.00	0.07	0.00	0.14	0.00														
180	0.14	0.00	0.00	0.00	0.04														

C Range: 0 - 360DEG
C Interval: 15.0DEG
Test Speed: HIGH
Temperature:25.3DEG
Operators:hushuai
Test Date:2016-05-14

γ Range: 0 - 180DEG
γ Interval: 1.0DEG
Test System:EVERFINE GO-2000A SYSTEM V1.0.135
Humidity:65.0%
Test Distance:8.570m [K=1.0000]
Remarks: