

LUMINOUS INTENSITY DISTRIBUTION DIAGRAM

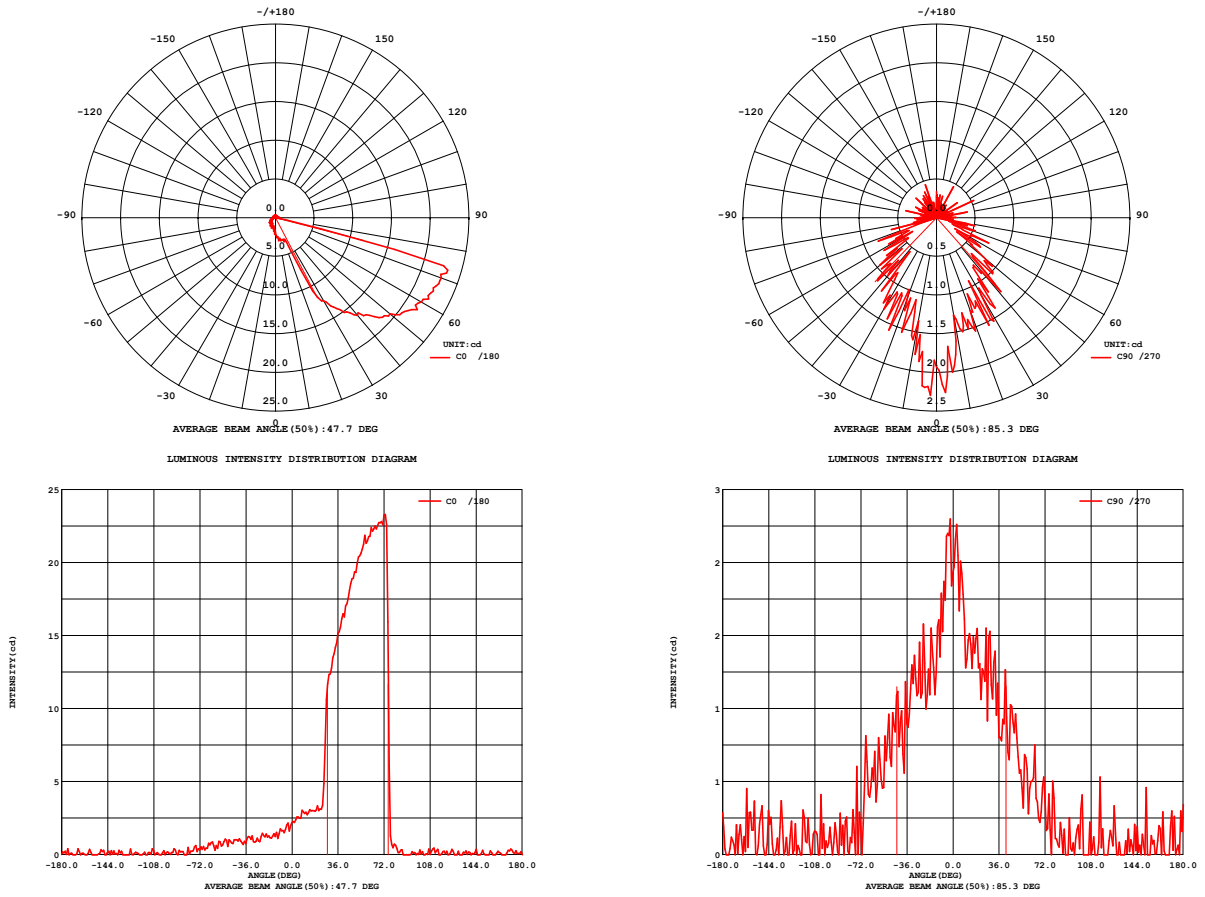


Fig. C0/C180

Fig. C90/C270

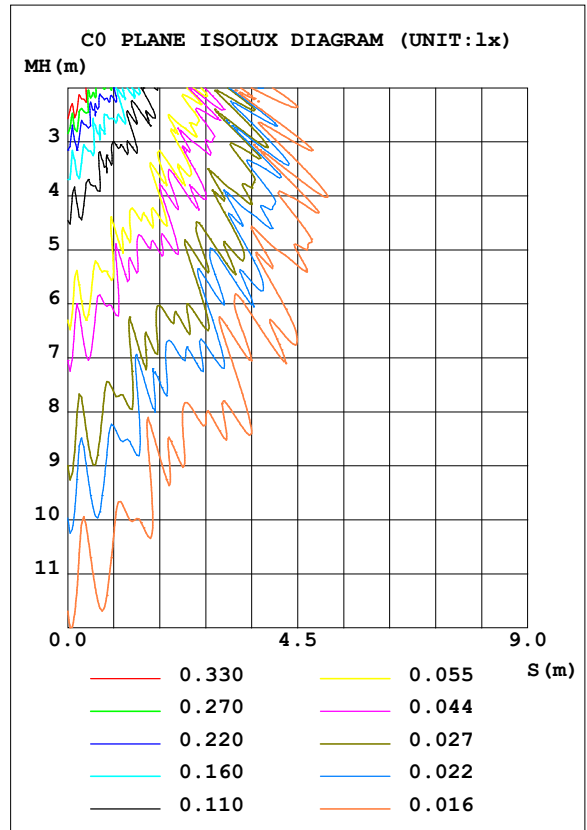
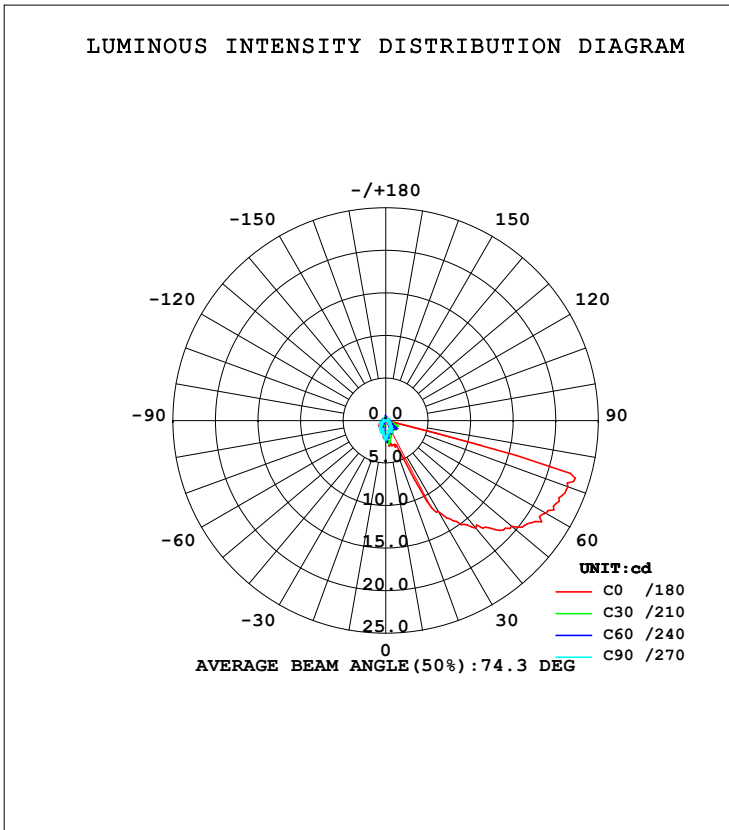
C Range: 0 - 360DEG
C Interval: 15.0DEG
Test Speed: HIGH
Temperature:25.3DEG
Operators:HUSHUAI
Test Date:2016-05-14

γ Range: 0 - 180DEG
 γ Interval: 1.0DEG
Test System:EVERFINE GO-2000A SYSTEM V1.0.135
Humidity:65.0%
Test Distance:8.570m [K=1.0000]
Remarks:

LUMINAIRE PHOTOMETRIC TEST REPORT

NAME: RTS0101-1	TYPE:	WEIGHT:
DIMENSION:	SPECIFICATION:	SERIAL No.:
MANUFACTURER:	SURFACE:	PROTECTION ANGLE:

DATA OF LAMP		PHOTOMETRIC DATA			
MODEL	3000K	I _{max} (cd)	23.27	S/MH (C0/180)	0.37
NOMINAL POWER (W)	2	EFFICIENCY (%)	100.0	S/MH (C90/270)	0.65
RATED VOLTAGE (V)	220	TOTAL FLUX (lm)	11.561	η UP (C0-180)	3.4
NOMINAL FLUX (lm)	11.6	CIE CLASS	DIRECT	η DN (C0-180)	19.7
LAMPS INSIDE	1	η up (%)	6.2	η UP (C180-360)	2.8
TEST VOLTAGE (V)	220.0	η down (%)	93.8	η DN (C180-360)	74.1



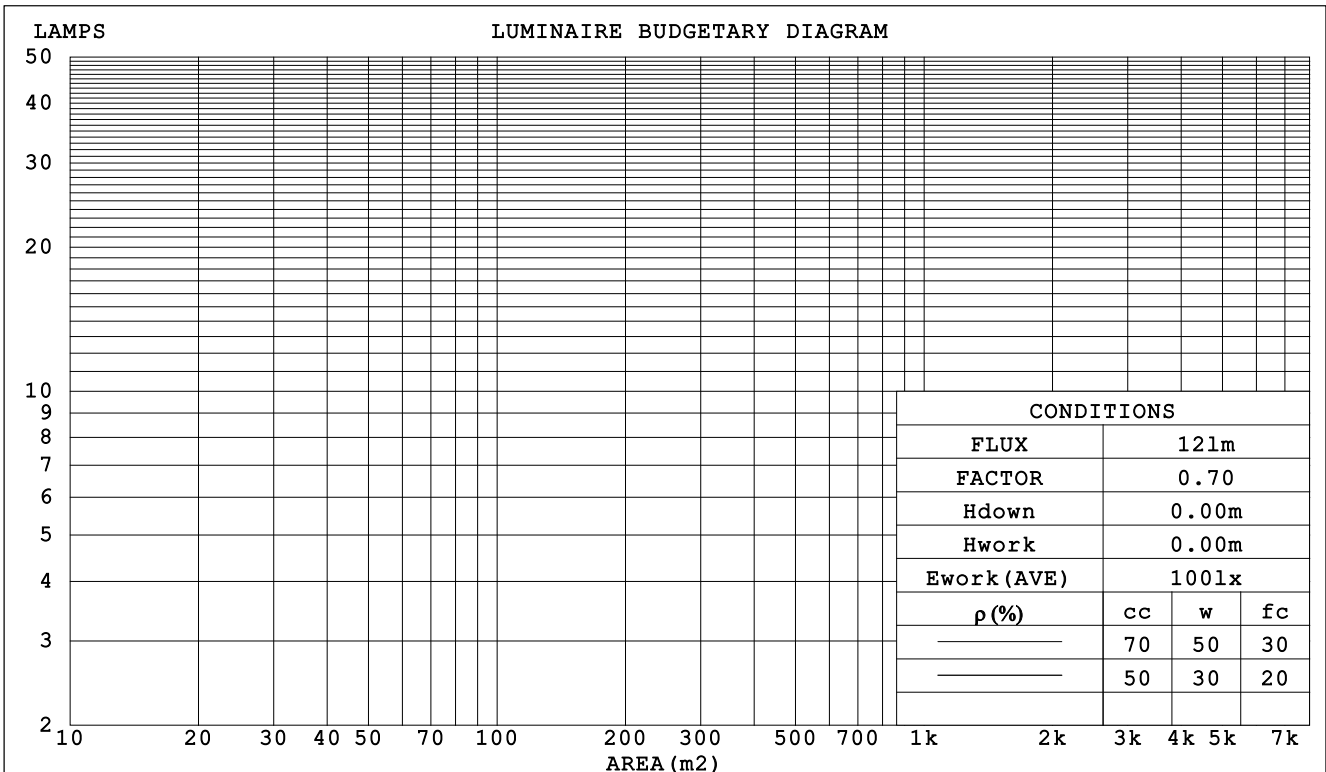
C Range: 0 - 360DEG
 C Interval: 15.0DEG
 Test Speed: HIGH
 Temperature: 25.3DEG
 Operators: HUSHUAI
 Test Date: 2016-05-14

γ Range: 0 - 180DEG
 γ Interval: 1.0DEG
 Test System: EVERFINE GO-2000A SYSTEM V1.0.135
 Humidity: 65.0%
 Test Distance: 8.570m [K=1.0000]
 Remarks:

CU AND LUMINAIRE BUDGETARY ESTIMATE DIAGRAM

NAME: RTS0101-1	TYPE:	WEIGHT:
DIMENSION:	SPECIFICATION:	SERIAL No.:
MANUFACTURER:	SURFACE:	PROTECTION ANGLE:

ρ_{cc}	80%			70%			50%			30%			10%			0
ρ_w	50%	30%	10%	50%	30%	10%	50%	30%	10%	50%	30%	10%	50%	30%	10%	0
ρ_{fc}	20%			20%			20%			20%			20%			0
RCR	RCR:Room Cavity Ratio						Coefficients of Utilization(CU)									
0.0	1.18	1.18	1.18	1.14	1.14	1.14	1.08	1.08	1.08	1.02	1.02	1.02	.96	.96	.96	.94
1.0	.00	.95	.90	.97	.92	.88	.91	.87	.84	.86	.83	.80	.82	.79	.77	.74
2.0	.84	.76	.69	.81	.74	.68	.77	.70	.65	.72	.67	.63	.68	.64	.60	.57
3.0	.71	.62	.54	.69	.60	.53	.65	.57	.51	.61	.55	.50	.58	.52	.48	.45
4.0	.61	.51	.43	.59	.50	.43	.56	.48	.41	.53	.46	.40	.50	.44	.39	.36
5.0	.54	.43	.36	.52	.42	.35	.49	.41	.34	.46	.39	.33	.44	.37	.32	.30
6.0	.47	.37	.30	.46	.36	.30	.43	.35	.29	.41	.34	.28	.39	.32	.27	.25
7.0	.42	.32	.26	.41	.32	.25	.39	.31	.25	.37	.29	.24	.35	.28	.23	.21
8.0	.38	.29	.22	.37	.28	.22	.35	.27	.21	.33	.26	.21	.31	.25	.20	.18
9.0	.34	.25	.19	.34	.25	.19	.32	.24	.19	.30	.23	.18	.29	.22	.18	.16
10.0	.31	.23	.17	.31	.22	.17	.29	.22	.17	.28	.21	.16	.26	.20	.16	.14



C Range: 0 - 360DEG
 C Interval: 15.0DEG
 Test Speed: HIGH
 Temperature:25.3DEG
 Operators:HUSHUAI
 Test Date:2016-05-14

γ Range: 0 - 180DEG
 γ Interval: 1.0DEG
 Test System:EVERFINE GO-2000A SYSTEM V1.0.135
 Humidity:65.0%
 Test Distance:8.570m [K=1.0000]
 Remarks:

ZONAL FLUX DIAGRAM

ZONAL FLUX DIAGRAM:

γ	C0	C45	C90	C135	C180	C225	C270	C315	γ	Φ zone	Φ total
5	1.712	1.906	2.178	2.016	2.578	2.473	1.668	1.853	0- 5	0.033	0.033
10	1.414	1.302	1.352	2.098	2.815	2.014	1.277	1.382	5- 10	0.106	0.138
15	1.258	1.373	1.277	1.734	2.992	1.963	1.273	1.243	10- 15	0.159	0.297
20	1.405	1.137	1.089	1.436	3.333	1.636	1.277	0.891	15- 20	0.202	0.499
25	0.881	1.046	1.071	1.446	4.845	1.258	1.186	0.697	20- 25	0.248	0.747
30	0.895	1.146	1.362	1.446	12.35	1.317	1.162	0.999	25- 30	0.389	1.135
35	1.094	0.399	0.872	1.314	14.48	1.425	1.173	1.001	30- 35	0.526	1.661
40	0.939	0.869	0.985	1.108	16.49	1.452	0.895	0.786	35- 40	0.577	2.239
45	1.016	0.747	0.839	1.371	18.08	1.537	1.026	0.508	40- 45	0.678	2.917
50	0.556	0.340	0.960	1.087	19.31	1.458	0.796	0.646	45- 50	0.764	3.681
55	0.586	0.477	0.454	1.282	20.91	1.655	0.319	0.284	50- 55	0.837	4.517
60	0.291	0.303	0.359	1.225	21.77	1.320	0.452	0.572	55- 60	0.911	5.429
65	0.787	0.160	0.394	0.624	22.48	1.018	0.384	0.462	60- 65	0.932	6.361
70	0.360	0.061	0.217	0.545	22.79	0.545	0.461	0.042	65- 70	0.945	7.306
75	0.627	0.271	0.605	0.367	15.94	0.293	0.415	0.123	70- 75	0.954	8.260
80	0.025	0	0.117	0.342	0.712	0.547	0.110	0.042	75- 80	0.240	8.500
85	0.199	0.379	0	0	0.297	0.127	0.133	0.073	80- 85	0.076	8.576
90	0.038	0.163	0.019	0	0	0	0	0.076	85- 90	0.069	8.645
95	0.018	0.234	0.084	0.041	0.075	0.273	0	0.242	90- 95	0.064	8.709
100	0.266	0.004	0	0.005	0.312	0	0.312	0.155	95-100	0.045	8.754
105	0.153	0.307	0	0.173	0.063	0.117	0	0.057	100-105	0.062	8.815
110	0.017	0.050	0.005	0.168	0.374	0.009	0.122	0	105-110	0.050	8.865
115	0.175	0	0.091	0.019	0	0	0.531	0	110-115	0.048	8.912
120	0.079	0.296	0.039	0	0.060	0	0	0	115-120	0.035	8.947
125	0.010	0.061	0.005	0	0.358	0.004	0.060	0.002	120-125	0.035	8.982
130	0	0	0.118	0.026	0.231	0.151	0.084	0	125-130	0.042	9.024
135	0.291	0.199	0.184	0.225	0.125	0.057	0.095	0.291	130-135	0.035	9.059
140	0.030	0.166	0	0	0	0.312	0.060	0.172	135-140	0.028	9.087
145	0	0.078	0.071	0	0	0.037	0.017	0.495	140-145	0.029	9.116
150	0.102	0.297	0.273	0.030	0.049	0.164	0	0.055	145-150	0.021	9.136
155	0	0.353	0.366	0.074	0.243	0.220	0.131	0.015	150-155	0.021	9.157
160	0	0.214	0.050	0.040	0.090	0.181	0.095	0	155-160	0.024	9.182
165	0	0.265	0.101	0	0	0	0.024	0.044	160-165	0.012	9.194
170	0	0	0	0.286	0.245	0	0.191	0.021	165-170	0.009	9.203
175	0.409	0.088	0	0.276	0.269	0	0.037	0.086	170-175	0.007	9.211
180	0.043	0	0.286	0	0	0	0.343	0.038	175-180	0.003	9.213
DEG	LUMINOUS INTENSITY:cd									UNIT:lm	

C Range: 0 - 360DEG
C Interval: 15.0DEG
Test Speed: HIGH
Temperature:25.3DEG
Operators:HUSHUAI
Test Date:2016-05-14

γ Range: 0 - 180DEG
 γ Interval: 1.0DEG
Test System:EVERFINE GO-2000A SYSTEM V1.0.135
Humidity:65.0%
Test Distance:8.570m [K=1.0000]
Remarks:

WEC AND CCEC

NAME: RTS0101-1	TYPE:	WEIGHT:
DIMENSION:	SPECIFICATION:	SERIAL No.:
MANUFACTURER:	SURFACE:	PROTECTION ANGLE:

ρ_{cc}	80%			70%			50%			30%			10%			0
ρ_w	50%	30%	10%	50%	30%	10%	50%	30%	10%	50%	30%	10%	50%	30%	10%	0
ρ_{fc}	20%			20%			20%			20%			20%			0
RCR	RCR:Room Cavity Ratio						Wall Exitance Coefficients (WEC)									
0.0																
1.0	.294	.167	.053	.287	.163	.052	.273	.157	.050	.260	.150	.048	.249	.144	.047	
2.0	.276	.151	.046	.269	.148	.046	.257	.143	.044	.246	.138	.043	.235	.133	.042	
3.0	.252	.134	.040	.246	.132	.040	.235	.127	.039	.225	.123	.038	.215	.119	.037	
4.0	.229	.119	.035	.224	.117	.035	.214	.113	.034	.205	.110	.033	.196	.106	.032	
5.0	.209	.106	.031	.204	.105	.031	.195	.102	.030	.187	.099	.029	.179	.096	.029	
6.0	.191	.096	.027	.187	.094	.027	.179	.092	.027	.171	.089	.026	.164	.086	.026	
7.0	.176	.087	.025	.172	.086	.024	.165	.083	.024	.158	.081	.024	.152	.079	.023	
8.0	.163	.080	.022	.159	.078	.022	.153	.076	.022	.146	.074	.021	.141	.072	.021	
9.0	.151	.073	.020	.148	.072	.020	.142	.070	.020	.136	.068	.020	.131	.067	.019	
10.0	.141	.068	.019	.138	.067	.019	.133	.065	.018	.128	.063	.018	.123	.062	.018	

ρ_{cc}	80%			70%			50%			30%			10%			0
ρ_w	50%	30%	10%	50%	30%	10%	50%	30%	10%	50%	30%	10%	50%	30%	10%	0
ρ_{fc}	20%			20%			20%			20%			20%			0
RCR	RCR:Room Cavity Ratio						Ceiling Cavity Exitance Coefficients (CCEC)									
0.0																
1.0	.189	.189	.189	.162	.162	.162	.110	.110	.110	.063	.063	.063	.020	.020	.020	
2.0	.181	.143	.111	.155	.123	.096	.106	.085	.067	.061	.050	.039	.020	.016	.013	
3.0	.176	.130	.092	.151	.112	.080	.104	.078	.056	.060	.045	.033	.019	.015	.011	
4.0	.171	.120	.080	.147	.103	.070	.101	.072	.049	.058	.042	.029	.019	.014	.010	
5.0	.165	.112	.072	.142	.097	.063	.098	.068	.044	.057	.040	.026	.018	.013	.009	
6.0	.159	.105	.067	.137	.091	.058	.094	.064	.041	.055	.038	.024	.018	.012	.008	
7.0	.153	.100	.063	.132	.087	.055	.091	.061	.039	.053	.036	.023	.017	.012	.008	
8.0	.148	.096	.060	.127	.083	.052	.088	.058	.037	.051	.034	.022	.017	.011	.007	
9.0	.142	.092	.057	.123	.080	.050	.085	.056	.036	.050	.033	.021	.016	.011	.007	
10.0	.137	.088	.056	.118	.077	.049	.082	.054	.034	.048	.032	.021	.016	.010	.007	

C Range: 0 - 360DEG
C Interval: 15.0DEG
Test Speed: HIGH
Temperature:25.3DEG
Operators:HUSHUAI
Test Date:2016-05-14

γ Range: 0 - 180DEG
γ Interval: 1.0DEG
Test System:EVERFINE GO-2000A SYSTEM V1.0.135
Humidity:65.0%
Test Distance:8.570m [K=1.0000]
Remarks:

Uncorrected UGR Table

NAME: RTS0101-1		TYPE:					WEIGHT:					
DIMENSION:		SPECIFICATION:					SERIAL No.:					
MANUFACTURER:		SURFACE:					PROTECTION ANGLE:					
ceiling/cavity		0.7	0.7	0.5	0.5	0.3	0.7	0.7	0.5	0.5	0.3	
walls		0.5	0.3	0.5	0.3	0.3	0.5	0.3	0.5	0.3	0.3	
working plane		0.2	0.2	0.2	0.2	0.2	0.2	0.2	0.2	0.2	0.2	
Room dimensions		Viewed crosswise					Viewed endwise					
x = 2H y = 2H	2H	15.0	16.7	15.4	17.0	17.4	13.5	15.2	13.9	15.5	15.9	
	3H	16.3	17.9	16.7	18.2	18.6	15.9	17.5	16.3	17.8	18.2	
	4H	18.1	19.6	18.6	20.0	20.4	16.9	18.4	17.4	18.8	19.2	
	6H	19.5	20.9	20.0	21.3	21.7	17.9	19.2	18.3	19.6	20.1	
	8H	19.7	21.1	20.2	21.5	21.9	18.1	19.4	18.5	19.8	20.3	
	12H	20.0	21.3	20.5	21.7	22.2	18.7	19.9	19.1	20.4	20.8	
	4H	2H	15.2	16.6	15.6	17.0	17.4	14.0	15.4	14.4	15.8	16.2
		3H	17.0	18.2	17.4	18.7	19.1	16.5	17.8	17.0	18.2	18.7
		4H	18.8	20.0	19.3	20.5	20.9	17.5	18.7	18.0	19.1	19.6
		6H	20.5	21.6	21.0	22.0	22.5	18.8	19.8	19.3	20.3	20.8
		8H	20.8	21.8	21.3	22.3	22.8	19.0	20.0	19.5	20.4	21.0
		12H	21.4	22.3	21.9	22.8	23.3	19.5	20.4	20.0	20.9	21.4
	8H	4H	18.9	19.9	19.4	20.3	20.9	17.6	18.6	18.1	19.1	19.6
		6H	20.7	21.5	21.3	22.1	22.6	19.3	20.1	19.8	20.6	21.1
		8H	21.2	21.9	21.7	22.4	23.0	19.6	20.3	20.1	20.8	21.4
		12H	22.2	22.9	22.8	23.4	24.0	20.1	20.7	20.7	21.3	21.9
	12H	4H	18.9	19.8	19.4	20.3	20.9	17.7	18.6	18.2	19.1	19.6
		6H	20.7	21.5	21.3	22.0	22.6	19.3	20.0	19.8	20.5	21.1
		8H	21.2	21.8	21.8	22.4	23.0	19.9	20.5	20.4	21.0	21.6
Variations with the observer position at spacings:												
S = 1.0H		+ 1.0 / - 1.1					+ 1.2 / - 1.6					
1.5H		+ 1.5 / - 1.9					+ 0.8 / - 2.3					
2.0H		+ 2.6 / - 4.2					+ 3.6 / - 4.2					

CIE Pub.117 Corrected 11.56 lm Total Lamp Luminous Flux. (8log(F/F0) = -15.5)

C Range: 0 - 360DEG
C Interval: 15.0DEG
Test Speed: HIGH
Temperature: 25.3DEG
Operators: HUSHUAI
Test Date: 2016-05-14

γ Range: 0 - 180DEG
γ Interval: 1.0DEG
Test System: EVERFINE GO-2000A SYSTEM V1.0.135
Humidity: 65.0%
Test Distance: 8.570m [K=1.0000]
Remarks:

UTILIZATION FACTORS TABLE

NAME: RTS0101-1	TYPE:	WEIGHT:
DIMENSION:	SPECIFICATION:	SERIAL No.:
MANUFACTURER:	SURFACE:	PROTECTION ANGLE:

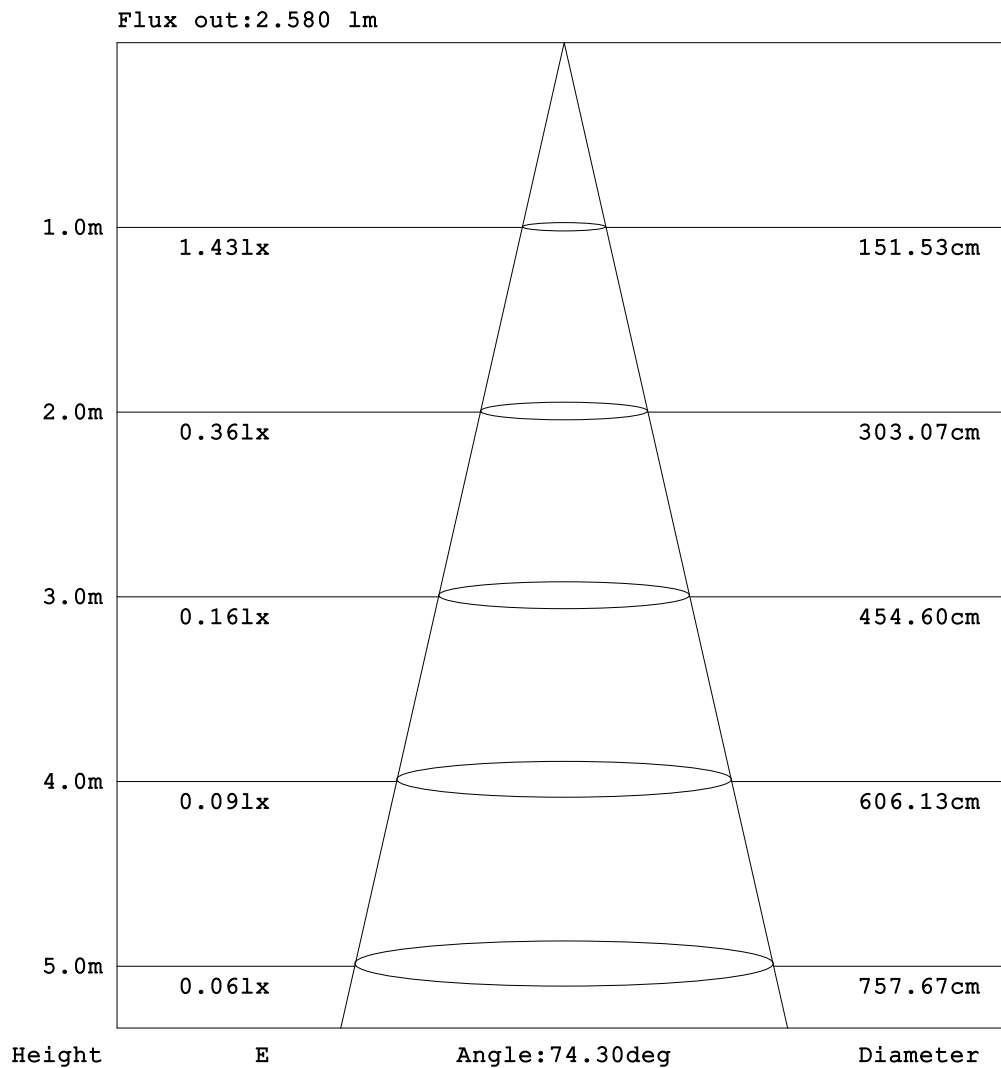
REFLECTANCE										
Ceiling	0.8	0.8	0.8	0.7	0.7	0.7	0.5	0.5	0.5	0
Walls	0.7	0.5	0.3	0.7	0.5	0.3	0.7	0.5	0.3	0
Working plane	0.2	0.2	0.2	0.2	0.2	0.2	0.2	0.2	0.2	0
ROOM INDEX	UTILIZATION FACTORS (PERCENT) k(RI) x RCR = 5									
k = 0.60	37	26	20	36	26	20	35	25	19	13
0.80	44	33	27	43	33	26	41	32	26	19
1.00	51	41	33	50	40	33	48	41	32	25
1.25	58	47	40	56	46	40	53	45	39	31
1.50	62	52	45	60	51	45	57	49	43	36
2.00	69	60	54	67	59	53	63	57	51	43
2.50	73	65	59	71	64	58	67	61	56	48
3.00	76	70	64	74	68	63	70	65	61	52
4.00	81	75	70	78	73	69	74	70	66	57
5.00	83	78	74	81	77	73	76	73	70	60
ROOM INDEX	UF(total)									Direct
According to DIN EN 13032-2 2004			Suspended				SHRNOM = 1.25			

C Range: 0 - 360DEG
C Interval: 15.0DEG
Test Speed: HIGH
Temperature: 25.3DEG
Operators: HUSHUAI
Test Date: 2016-05-14

γ Range: 0 - 180DEG
 γ Interval: 1.0DEG
Test System: EVERFINE GO-2000A SYSTEM V1.0.135
Humidity: 65.0%
Test Distance: 8.570m [K=1.0000]
Remarks:

AAI Figure

NAME: RTS0101-1	TYPE:	WEIGHT:
DIMENSION:	SPECIFICATION:	SERIAL No.:
MANUFACTURER:	SURFACE:	PROTECTION ANGLE:



Note:The Curves indicate the illuminated area and the average illumination when the luminaire is at different distance.

C Range: 0 - 360DEG
C Interval: 15.0DEG
Test Speed: HIGH
Temperature:25.3DEG
Operators:HUSHUAI
Test Date:2016-05-14

γ Range: 0 - 180DEG
 γ Interval: 1.0DEG
Test System:EVERFINE GO-2000A SYSTEM V1.0.135
Humidity:65.0%
Test Distance:8.570m [K=1.0000]
Remarks:

LUMINOUS DISTRIBUTION INTENSITY DATA

NAME: RTS0101-1	TYPE:	WEIGHT:
DIMENSION:	SPECIFICATION:	SERIAL No.:
MANUFACTURER:	SURFACE:	PROTECTION ANGLE:

Table--1

UNIT: cd

C (DEG) \ γ (DEG)	0	15	30	45	60	75	90	105	120	135	150	165	180	195	210	225	240	255	270
0	2.18	2.03	2.22	1.99	2.13	1.92	1.92	2.25	1.88	2.20	2.05	2.13	2.18	2.03	2.22	1.99	2.13	1.92	1.92
5	1.71	1.69	1.77	1.90	1.96	1.81	2.17	1.99	2.14	2.01	2.35	2.42	2.57	2.62	2.41	2.47	2.57	2.17	1.66
10	1.41	1.44	1.24	1.30	1.34	1.58	1.35	1.59	1.77	2.09	2.39	2.75	2.81	3.01	2.54	2.01	2.07	1.64	1.27
15	1.25	1.45	1.56	1.37	1.24	1.59	1.27	1.35	1.29	1.73	1.83	2.59	2.99	3.09	2.17	1.96	1.23	1.50	1.27
20	1.40	1.06	1.18	1.13	0.90	1.58	1.08	1.59	1.61	1.43	1.63	2.45	3.33	3.01	1.96	1.63	1.23	1.31	1.27
25	0.88	1.21	1.28	1.04	1.11	0.97	1.07	1.39	1.54	1.44	1.57	2.41	4.84	3.80	1.40	1.25	1.47	1.28	1.18
30	0.90	0.84	0.60	1.14	0.67	1.28	1.36	1.27	1.48	1.44	1.31	6.13	12.3	12.2	1.51	1.31	0.81	1.64	1.16
35	1.09	1.09	0.74	0.40	0.71	0.73	0.87	0.96	1.31	1.31	1.16	2.88	14.4	14.4	1.44	1.42	1.18	1.11	1.17
40	0.94	0.93	0.79	0.87	0.83	0.78	0.98	1.29	1.19	1.10	1.50	1.87	16.4	16.2	1.31	1.45	1.18	1.17	0.90
45	1.01	0.77	0.93	0.75	0.44	0.53	0.84	1.04	1.39	1.37	1.15	1.46	18.0	17.8	1.39	1.53	1.33	1.33	1.02
50	0.56	1.18	0.54	0.34	0.67	0.59	0.96	0.88	1.06	1.08	1.46	1.34	19.3	19.3	1.18	1.45	1.33	0.96	0.80
55	0.59	0.99	0.34	0.48	0.37	0.77	0.45	0.56	1.10	1.28	1.32	1.10	20.9	20.6	1.10	1.65	1.70	0.84	0.32
60	0.29	0.26	0.41	0.30	0.00	0.58	0.36	0.46	0.81	1.22	1.27	1.09	21.7	21.3	1.37	1.32	1.00	0.75	0.45
65	0.79	0.58	0.29	0.16	0.35	0.25	0.39	0.32	0.63	0.62	1.24	0.88	22.4	22.5	1.40	1.01	0.70	0.68	0.38
70	0.36	0.29	0.44	0.06	0.41	0.06	0.22	0.35	0.47	0.55	0.85	0.82	22.7	22.5	0.70	0.55	0.55	0.62	0.46
75	0.63	0.39	0.01	0.27	0.02	0.32	0.60	0.29	0.38	0.37	0.17	0.61	15.9	17.0	0.14	0.29	0.17	0.02	0.41
80	0.03	0.04	0.25	0.00	0.00	0.32	0.12	0.03	0.35	0.34	0.06	0.28	0.71	0.58	0.28	0.55	0.00	0.27	0.11
85	0.20	0.25	0.10	0.38	0.20	0.00	0.00	0.06	0.27	0.00	0.07	0.00	0.30	0.32	0.01	0.13	0.27	0.10	0.13
90	0.04	0.21	0.17	0.16	0.08	0.32	0.02	0.00	0.00	0.00	0.08	0.17	0.00	0.30	0.13	0.00	0.00	0.03	0.00
95	0.02	0.15	0.53	0.23	0.17	0.31	0.08	0.03	0.01	0.04	0.02	0.00	0.08	0.15	0.13	0.27	0.29	0.02	0.00
100	0.27	0.00	0.00	0.00	0.11	0.36	0.00	0.01	0.15	0.01	0.10	0.01	0.31	0.04	0.00	0.00	0.00	0.11	0.31
105	0.15	0.00	0.14	0.31	0.17	0.22	0.00	0.11	0.55	0.17	0.00	0.18	0.06	0.00	0.14	0.12	0.08	0.00	0.00
110	0.02	0.00	0.00	0.05	0.27	0.22	0.01	0.19	0.24	0.17	0.01	0.09	0.37	0.46	0.00	0.01	0.06	0.11	0.12
115	0.18	0.01	0.29	0.00	0.13	0.00	0.09	0.00	0.08	0.02	0.30	0.35	0.00	0.00	0.16	0.00	0.41	0.09	0.53
120	0.08	0.33	0.13	0.30	0.17	0.40	0.04	0.09	0.05	0.00	0.00	0.07	0.06	0.22	0.04	0.00	0.03	0.00	0.00
125	0.01	0.00	0.00	0.06	0.00	0.00	0.01	0.00	0.00	0.00	0.12	0.18	0.36	0.01	0.17	0.00	0.18	0.24	0.06
130	0.00	0.23	0.08	0.00	0.00	0.26	0.12	0.11	0.06	0.03	0.03	0.00	0.23	0.13	0.00	0.15	0.17	0.00	0.08
135	0.29	0.00	0.13	0.20	0.10	0.04	0.18	0.19	0.00	0.22	0.16	0.26	0.13	0.00	0.06	0.06	0.00	0.12	0.09
140	0.03	0.08	0.03	0.17	0.03	0.25	0.00	0.42	0.00	0.00	0.19	0.21	0.00	0.13	0.14	0.31	0.35	0.14	0.06
145	0.00	0.03	0.20	0.08	0.10	0.00	0.07	0.18	0.23	0.00	0.27	0.09	0.00	0.00	0.00	0.04	0.00	0.33	0.02
150	0.10	0.00	0.14	0.30	0.00	0.00	0.27	0.13	0.12	0.03	0.04	0.04	0.05	0.00	0.00	0.16	0.14	0.09	0.00
155	0.00	0.08	0.22	0.35	0.35	0.19	0.37	0.00	0.04	0.07	0.00	0.23	0.24	0.24	0.08	0.22	0.09	0.00	0.13
160	0.00	0.11	0.20	0.21	0.00	0.00	0.05	0.00	0.13	0.04	0.02	0.00	0.09	0.00	0.19	0.18	0.05	0.05	0.09
165	0.00	0.00	0.23	0.26	0.20	0.00	0.10	0.21	0.00	0.00	0.17	0.00	0.00	0.18	0.00	0.00	0.00	0.04	0.02
170	0.00	0.17	0.02	0.00	0.11	0.14	0.00	0.34	0.09	0.29	0.03	0.30	0.25	0.04	0.27	0.00	0.00	0.00	0.19
175	0.41	0.00	0.02	0.09	0.00	0.06	0.00	0.08	0.11	0.28	0.00	0.17	0.27	0.00	0.11	0.00	0.00	0.14	0.04
180	0.04	0.00	0.04	0.00	0.29	0.12	0.29	0.00	0.22	0.00	0.19	0.17	0.00	0.06	0.00	0.00	0.00	0.00	0.34

C Range: 0 - 360DEG
C Interval: 15.0DEG
Test Speed: HIGH
Temperature:25.3DEG
Operators:HUSHUAI
Test Date:2016-05-14

γ Range: 0 - 180DEG
γ Interval: 1.0DEG
Test System:EVERFINE GO-2000A SYSTEM V1.0.135
Humidity:65.0%
Test Distance:8.570m [K=1.0000]
Remarks:

LUMINOUS DISTRIBUTION INTENSITY DATA

NAME: RTS0101-1	TYPE:	WEIGHT:
DIMENSION:	SPECIFICATION:	SERIAL No.:
MANUFACTURER:	SURFACE:	PROTECTION ANGLE:

Table--2

UNIT: cd

C (DEG) γ (DEG)	285	300	315	330	345														
0	2.25	1.88	2.20	2.05	2.13														
5	1.93	1.71	1.85	1.47	1.90														
10	1.96	1.56	1.38	1.71	1.48														
15	1.23	1.46	1.24	1.31	1.43														
20	1.50	1.42	0.89	1.07	1.14														
25	1.28	1.10	0.70	0.78	1.43														
30	0.79	0.77	1.00	0.91	0.96														
35	0.57	0.49	1.00	0.57	0.90														
40	0.72	0.93	0.79	0.70	1.15														
45	0.90	0.75	0.51	0.67	1.11														
50	0.72	0.20	0.65	0.63	0.94														
55	0.54	0.39	0.28	0.33	0.67														
60	0.56	0.66	0.57	0.08	0.34														
65	0.40	0.36	0.46	0.41	0.17														
70	0.17	0.33	0.04	0.13	0.56														
75	0.15	0.21	0.12	0.06	0.31														
80	0.27	0.20	0.04	0.04	0.00														
85	0.06	0.03	0.07	0.09	0.22														
90	0.00	0.10	0.08	0.16	0.18														
95	0.03	0.12	0.24	0.10	0.00														
100	0.24	0.00	0.15	0.00	0.04														
105	0.44	0.12	0.06	0.14	0.06														
110	0.00	0.00	0.00	0.08	0.01														
115	0.21	0.24	0.00	0.00	0.00														
120	0.11	0.10	0.00	0.12	0.00														
125	0.26	0.06	0.00	0.12	0.24														
130	0.23	0.00	0.00	0.00	0.04														
135	0.18	0.03	0.29	0.15	0.00														
140	0.00	0.11	0.17	0.00	0.00														
145	0.16	0.00	0.50	0.24	0.06														
150	0.32	0.02	0.06	0.01	0.14														
155	0.27	0.12	0.01	0.20	0.06														
160	0.00	0.00	0.00	0.04	0.53														
165	0.00	0.02	0.04	0.02	0.00														
170	0.21	0.12	0.02	0.24	0.03														
175	0.00	0.16	0.09	0.10	0.33														
180	0.18	0.30	0.04	0.00	0.16														

C Range: 0 - 360DEG
C Interval: 15.0DEG
Test Speed: HIGH
Temperature:25.3DEG
Operators:HUSHUAI
Test Date:2016-05-14

γ Range: 0 - 180DEG
γ Interval: 1.0DEG
Test System:EVERFINE GO-2000A SYSTEM V1.0.135
Humidity:65.0%
Test Distance:8.570m [K=1.0000]
Remarks: